

# TOMM6 antibody



Catalog Number: 116242

## Product name

TOMM6 antibody

Polyclonal

## Ig Type

## Specificity

human, mouse, rat; other species not tested.

Rabbit IgG

## Applications

## Antibody description

TOMM6 Rabbit Polyclonal antibody. Positive WB detected in human skeletal muscle tissue, MCF7 cells. Observed molecular weight by Western-blot: 8kd

ELISA, WB

## Dilutions

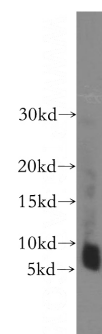
Recommended Dilution:

WB: 1:500-1:5000

## Preparation

This antibody was obtained by immunization of TOMM6 recombinant protein (Accession Number: NM\_001134493). Purification method: Antigen affinity purified.

## Validations



## Formulation

PBS with 0.02% sodium azide and 50% glycerol pH 7.3.

## Storage

Store at -20°C. DO NOT ALIQUOT

## Clonality

human skeletal muscle tissue were subjected to SDS PAGE followed by western blot with Catalog No:116242(TOMM6 antibody) at dilution of 1:400