

TRAK2 antibody

Catalog Number: 116238

Product name

TRAK2 antibody

IP: 1:200-1:2000

IHC: 1:20-1:200

Specificity

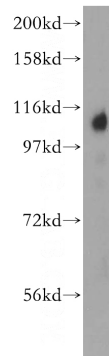
Human, Mouse, Rat; other species not tested.

IF: 1:20-1:200

Antibody description

TRAK2 Rabbit Polyclonal antibody. Positive IF detected in Hela cells. Positive IHC detected in human liver cancer tissue. Positive IP detected in HepG2 cells. Positive WB detected in human liver tissue. Observed molecular weight by Western-blot: 101-106kd

Validations



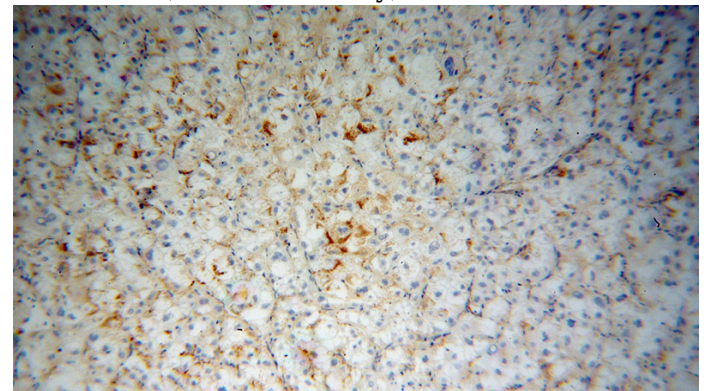
Preparation

This antibody was obtained by immunization of TRAK2 recombinant protein (Accession Number: XM_011511690). Purification method: Antigen affinity purified.

human liver tissue were subjected to SDS PAGE followed by western blot with Catalog No:116238(TRAK2 antibody) at dilution of 1:500

Formulation

PBS with 0.02% sodium azide and 50% glycerol pH 7.3.



Storage

Store at -20°C. DO NOT ALIQUOT

Clonality

Polyclonal

Ig Type

Rabbit IgG

Applications

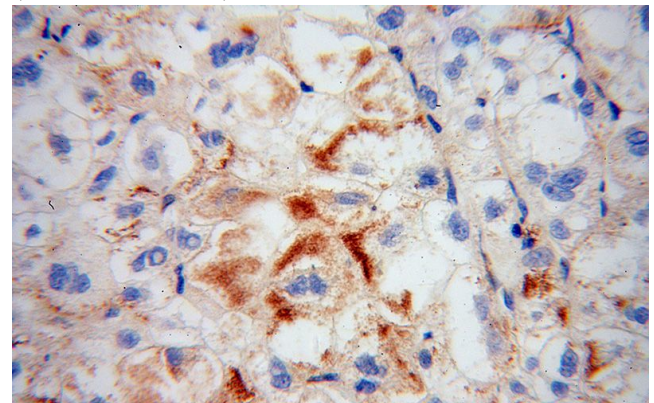
ELISA, WB, IHC, IF, IP

Dilutions

Recommended Dilution:

WB: 1:500-1:5000

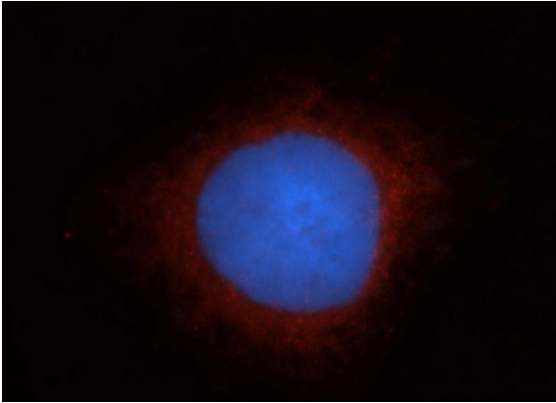
Immunohistochemical of paraffin-embedded human liver cancer using Catalog No:116238(TRAK2 antibody) at dilution of 1:100 (under 10x lens)



TRAK2 antibody

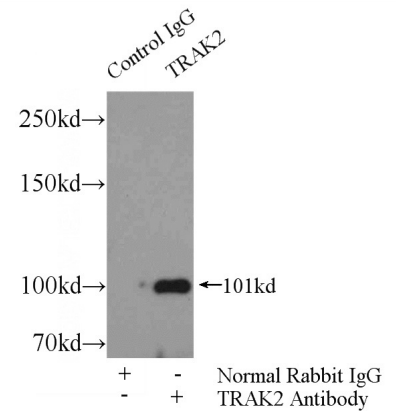
Catalog Number: 116238

Immunohistochemical of paraffin-embedded human liver cancer using Catalog No:116238(TRAK2 antibody) at dilution of 1:100 (under 40x lens)



Immunofluorescent analysis of Hela cells, using TRAK2 antibody Catalog No:116238 at 1:50

dilution and Rhodamine-labeled goat anti-rabbit IgG (red). Blue pseudocolor = DAPI (fluorescent



DNA dye).

IP Result of anti-TRAK2 (IP:Catalog No:116238, 4ug; Detection:Catalog No:116238 1:500) with HepG2 cells lysate 4000ug.