

# TPT1 antibody

Catalog Number: 116220

## Product name

TPT1 antibody

## Immunogen

[Human TPT1 Recombinant protein \(GST tag\)](#)

## Specificity

Human, Mouse, Rat; other species not tested.

## Antibody description

TPT1 Rabbit Polyclonal antibody. Positive IP detected in human placenta tissue. Positive WB detected in mouse placenta tissue, A431 cells, HepG2 cells, MCF7 cells, mouse testis tissue, PC-3 cells. Positive IHC detected in human colon cancer tissue. Observed molecular weight by Western-blot: 22-25 kDa

## Preparation

This antibody was obtained by immunization of TPT1 recombinant protein (Accession Number: NM\_003295). Purification method: Antigen affinity purified.

## Formulation

PBS with 0.1% sodium azide and 50% glycerol pH 7.3.

## Storage

Store at -20°C. DO NOT ALIQUOT

## Clonality

Polyclonal

## Ig Type

Rabbit IgG

## Applications

ELISA, WB, IP, IHC

## Dilutions

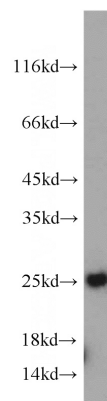
Recommended Dilution:

WB: 1:200-1:2000

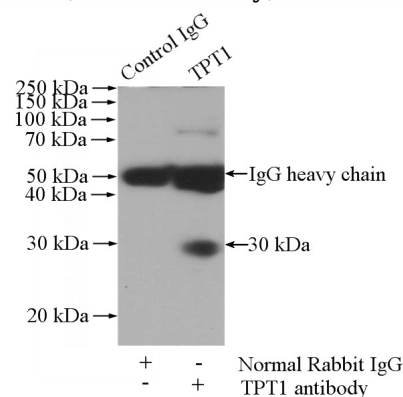
IP: 1:200-1:2000

IHC: 1:20-1:200

## Validations



mouse placenta tissue were subjected to SDS PAGE followed by western blot with Catalog No:116220(TPT1 antibody) at dilution of 1:800

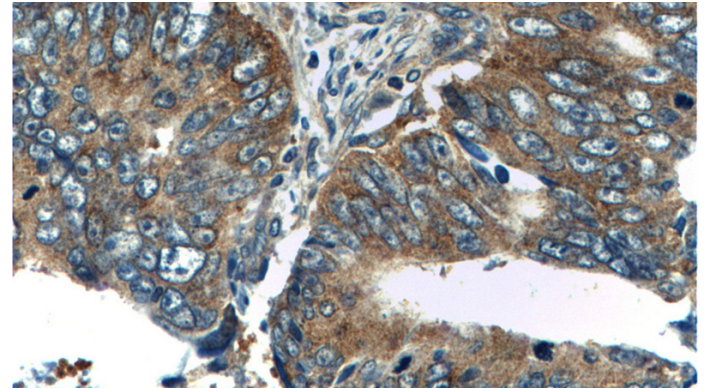
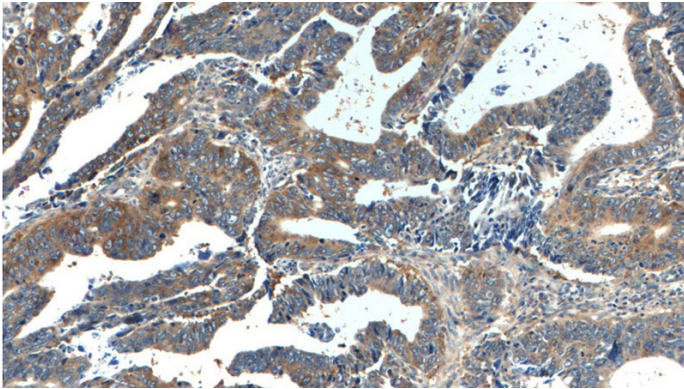


IP Result of anti-TPT1 (IP:Catalog No:116220, 4ug; Detection:Catalog No:116220 1:500) with human placenta tissue lysate 1520ug.

# TPT1 antibody

Catalog Number: 116220

---



Immunohistochemistry of paraffin-embedded human colon cancer tissue slide using Catalog No:116220(TPT1 Antibody) at dilution of 1:200 (under 10x lens).

Immunohistochemistry of paraffin-embedded human colon cancer tissue slide using Catalog No:116220(TPT1 Antibody) at dilution of 1:200 (under 40x lens).