

TMF1-Specific antibody



Catalog Number: 116203

Product name

TMF1-Specific antibody

IP: 1:200-1:1000

IHC: 1:20-1:200

Specificity

Human; other species not tested.

IF: 1:20-1:200

Antibody description

TMF1-Specific Rabbit Polyclonal antibody.
Positive IHC detected in human cervical cancer tissue, human testis tissue. Positive IF detected in HepG2 cells. Positive IP detected in HepG2 cells. Positive WB detected in HepG2 cells, BxPC-3 cells, L02 cells. Observed molecular weight by Western-blot: 150-160 kDa

Preparation

This antibody was obtained by immunization of Peptide (Accession Number: NM_007114).
Purification method: Antigen affinity purified.

Formulation

PBS with 0.02% sodium azide and 50% glycerol
pH 7.3.

Storage

Store at -20°C. DO NOT ALIQUOT

Clonality

Polyclonal

Ig Type

Rabbit IgG

Applications

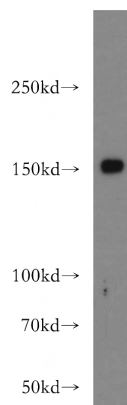
ELISA, WB, IHC, IP, IF

Dilutions

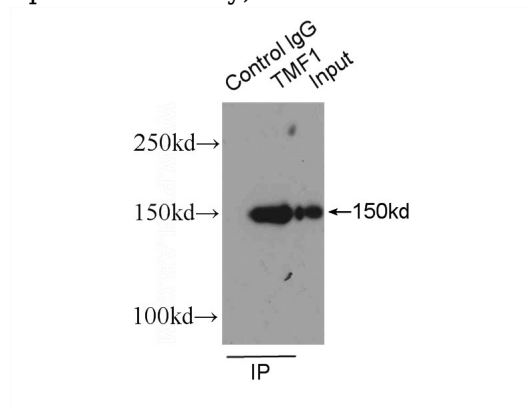
Recommended Dilution:

WB: 1:500-1:5000

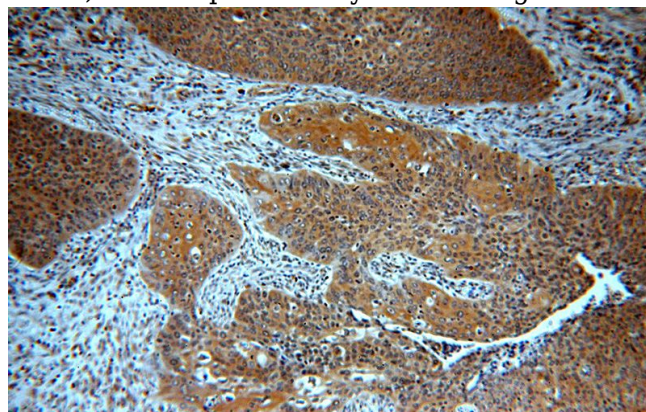
Validations



HepG2 cells were subjected to SDS PAGE followed by western blot with Catalog No:116203(TMFI-Specific antibody) at dilution of 1:300



IP Result of anti-TMF1-Specific (IP:Catalog No:116203, 4ug; Detection:Catalog No:116203 1:300) with HepG2 cells lysate 3600ug.

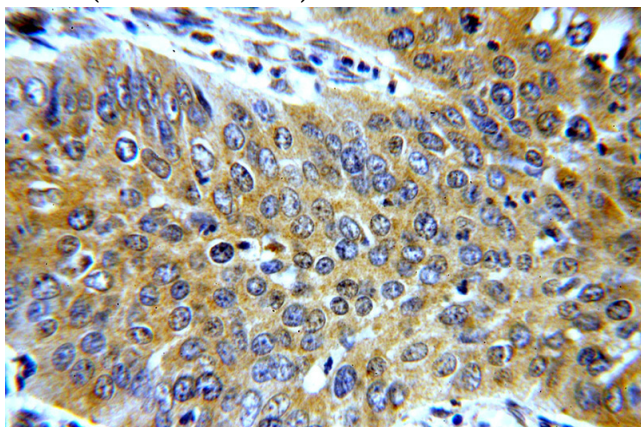


TMF1-Specific antibody



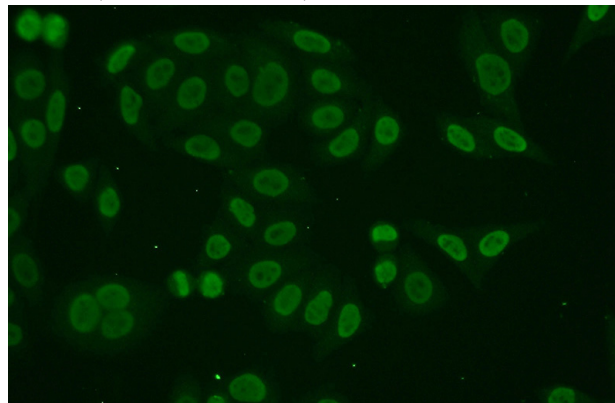
Catalog Number: 116203

Immunohistochemical of paraffin-embedded human cervical cancer using Catalog No:116203(TMFI-Specific antibody) at dilution of 1:100 (under 10x lens)



Immunohistochemical of paraffin-embedded human cervical cancer using Catalog

No:116203(TMFI-Specific antibody) at dilution of 1:100 (under 40x lens)



Immunofluorescent analysis of (-20oc Ethanol) fixed HepG2 cells using Catalog No:116203(TMFI-Specific Antibody) at dilution of 1:50 and Alexa Fluor 488-conjugated AffiniPure Goat Anti-Rabbit IgG(H+L)