

TMEM59 antibody



Catalog Number: 116193

Product name

TMEM59 antibody

IHC: 1:20-1:200

IF: 1:10-1:100

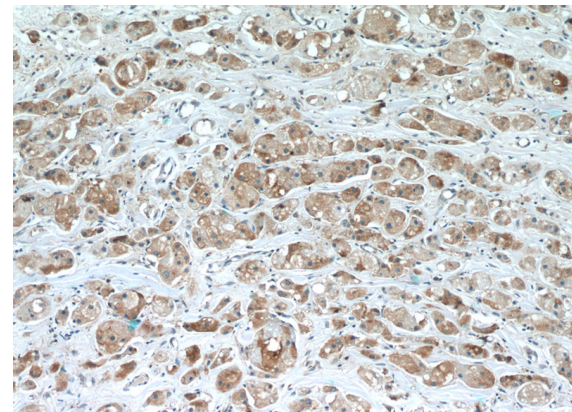
Specificity

Human; other species not tested.

Validations

Antibody description

TMEM59 Rabbit Polyclonal antibody. Positive IF detected in HepG2 cells. Positive IHC detected in human breast cancer tissue, human liver tissue. Positive WB detected in MCF-7 cells. Observed molecular weight by Western-blot: 41 kDa



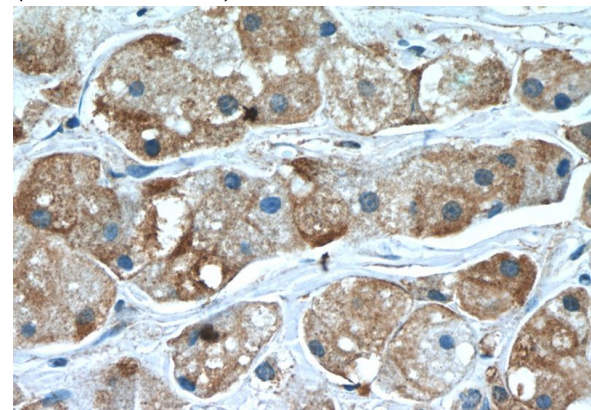
Preparation

This antibody was obtained by immunization of TMEM59 recombinant protein (Accession Number: NM_001305043). Purification method: Antigen Affinity purified.

Immunohistochemistry of paraffin-embedded human breast cancer slide using Catalog No:116193(TMEM59 Antibody) at dilution of 1:50 (under 10x lens)

Formulation

PBS with 0.02% sodium azide and 50% glycerol pH 7.3.



Storage

Store at -20°C. DO NOT ALIQUOT

Clonality

Polyclonal

Ig Type

Rabbit IgG

Applications

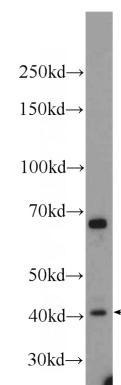
ELISA, IHC, WB, IF

Dilutions

Recommended Dilution:

WB: 1:200-1:1000

Immunohistochemistry of paraffin-embedded human breast cancer slide using Catalog No:116193(TMEM59 Antibody) at dilution of 1:50 (under 40x lens)



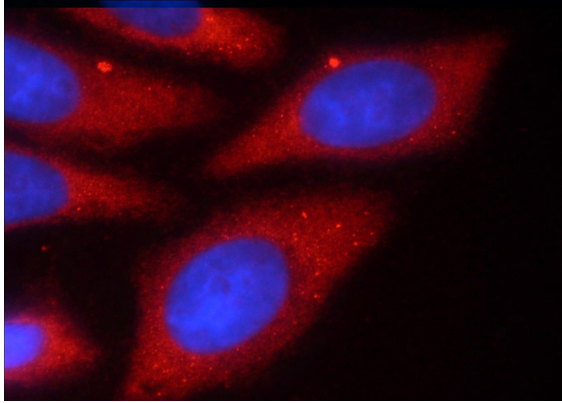
(under 40x lens)

TMEM59 antibody



Catalog Number: 116193

MCF-7 cells were subjected to SDS PAGE followed by western blot with Catalog No:116193(TMEM59 Antibody) at dilution of 1:300



Immunofluorescent analysis of HepG2 cells using Catalog No:116193(TMEM59 Antibody) at dilution of 1:25 and Rhodamine-Goat anti-Rabbit IgG