

TMEM38A antibody



Catalog Number: 116186

Product name

TMEM38A antibody

Specificity

Human, Mouse, Rat; other species not tested.

Antibody description

TMEM38A Rabbit Polyclonal antibody. Positive WB detected in mouse skeletal muscle tissue, HeLa cells. Observed molecular weight by Western-blot: 33kd

Preparation

This antibody was obtained by immunization of TMEM38A recombinant protein (Accession Number: NM_024074). Purification method: Antigen affinity purified.

Formulation

PBS with 0.02% sodium azide and 50% glycerol pH 7.3.

Storage

Store at -20°C. DO NOT ALIQUOT

Clonality

Polyclonal

Ig Type

Rabbit IgG

Applications

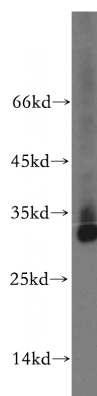
ELISA, WB

Dilutions

Recommended Dilution:

WB: 1:500-1:5000

Validations



mouse skeletal muscle tissue were subjected to SDS PAGE followed by western blot with Catalog No:116186(TMEM38A antibody) at dilution of 1:400