

# TMEM25 antibody



Catalog Number: 116181

## Product name

TMEM25 antibody

## Specificity

Human, Mouse, Rat; other species not tested.

## Antibody description

TMEM25 Rabbit Polyclonal antibody. Positive WB detected in mouse liver tissue, mouse brain tissue. Positive IHC detected in human stomach cancer tissue, human liver tissue. Observed molecular weight by Western-blot: 40 kDa

## Preparation

This antibody was obtained by immunization of TMEM25 recombinant protein (Accession Number: XM\_024448724). Purification method: Antigen affinity purified.

## Formulation

PBS with 0.1% sodium azide and 50% glycerol pH 7.3.

## Storage

Store at -20°C. DO NOT ALIQUOT

## Clonality

Polyclonal

## Ig Type

Rabbit IgG

## Applications

ELISA, WB, IHC

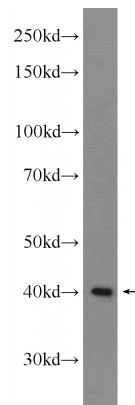
## Dilutions

Recommended Dilution:

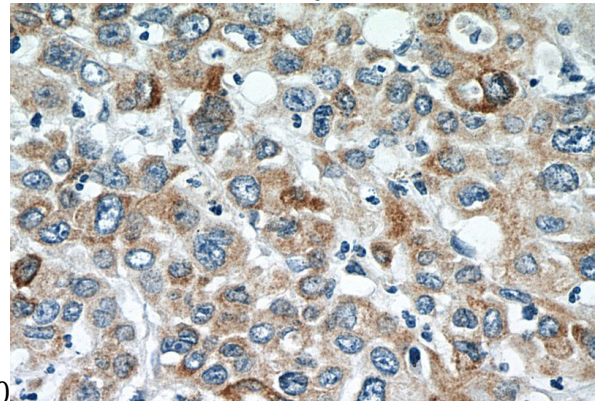
WB: 1:500-1:5000

IHC: 1:20-1:200

## Validations



mouse liver tissue were subjected to SDS PAGE followed by western blot with Catalog No:116181(TMEM25 Antibody) at dilution of



1:1000. Immunohistochemistry of paraffin-embedded human stomach cancer slide using Catalog No:116181(TMEM25 Antibody) at dilution of 1:50