

Tom40 antibody



Catalog Number: 116173

Product name

Tom40 antibody

Specificity

Human, Mouse, Rat; other species not tested.

Antibody description

Tom40 Rabbit Polyclonal antibody. Positive IP detected in mouse liver tissue. Positive WB detected in human brain tissue, A431 cells, HEK-293 cells, HepG2 cells, human liver tissue. Positive IHC detected in human liver tissue, human brain tissue, human heart tissue, human kidney tissue, human lung tissue, human ovary tissue, human placenta tissue, human testis tissue. Positive IF detected in HepG2 cells, HeLa cells. Positive FC detected in HepG2 cells. Observed molecular weight by Western-blot: 38 kDa

Preparation

This antibody was obtained by immunization of Tom40 recombinant protein (Accession Number: NM_001128916). Purification method: Antigen affinity purified.

Formulation

PBS with 0.02% sodium azide and 50% glycerol pH 7.3.

Storage

Store at -20°C. DO NOT ALIQUOT

Clonality

Polyclonal

Ig Type

Rabbit IgG

Applications

ELISA, WB, IF, IP, IHC, FC

Dilutions

Recommended Dilution:

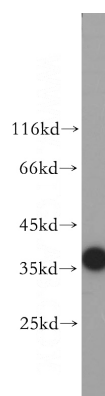
WB: 1:500-1:5000

IP: 1:500-1:5000

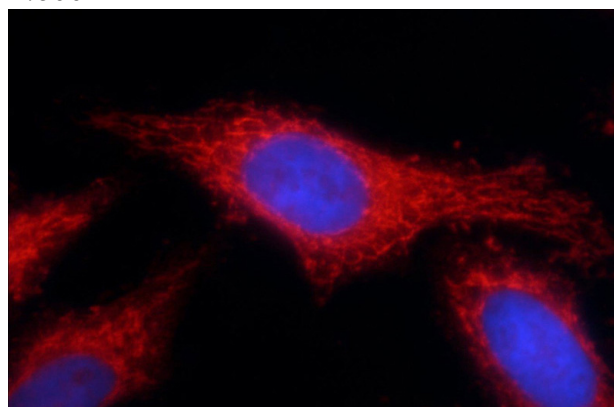
IHC: 1:20-1:200

IF: 1:10-1:100

Validations



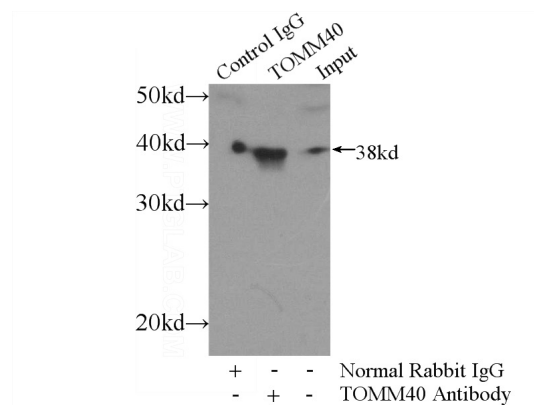
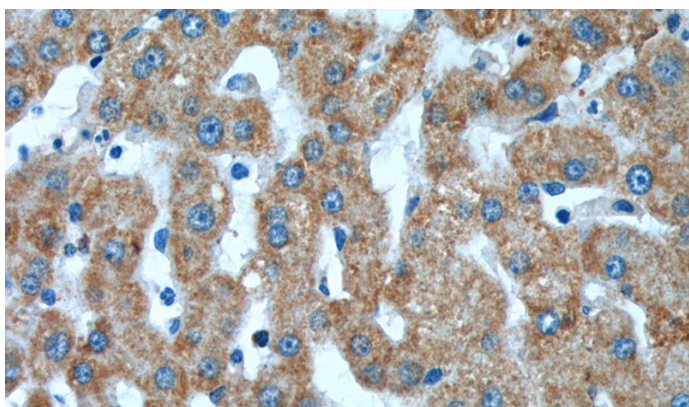
human brain tissue were subjected to SDS PAGE followed by western blot with Catalog No:116173(TOMM40 antibody) at dilution of 1:600



Immunofluorescent analysis of HepG2 cells using Catalog No:116173(TOMM40 Antibody) at dilution of 1:25 and Rhodamine-Goat anti-Rabbit IgG

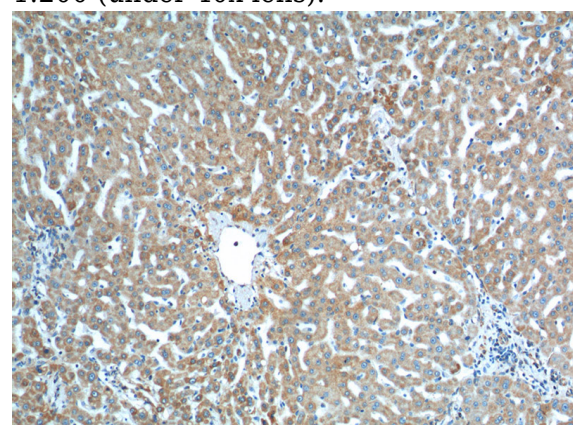
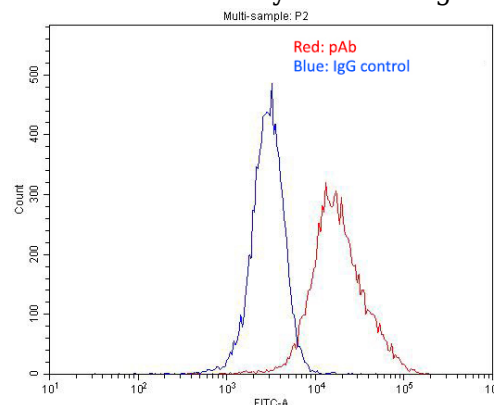
Tom40 antibody

Catalog Number: 116173



Immunohistochemistry of paraffin-embedded human liver tissue slide using Catalog No:116173(TOMM40 Antibody) at dilution of 1:200 (under 40x lens).

IP Result of anti-TOMM40 (IP:Catalog No:116173, 4ug; Detection:Catalog No:116173 1:1000) with mouse liver tissue lysate 4000ug.



1X10⁶ HepG2 cells were stained with .2ug TOMM40 antibody (Catalog No:116173, red) and control antibody (blue). Fixed with 4% PFA blocked with 3% BSA (30 min). Alexa Fluor 488-conjugated AffiniPure Goat Anti-Rabbit IgG(H+L) with dilution 1:1500.