

TOM1 antibody



Catalog Number: 116169

Product name

TOM1 antibody

Specificity

Human, Mouse; other species not tested.

Antibody description

TOM1 Rabbit Polyclonal antibody. Positive WB detected in mouse liver tissue, mouse heart tissue. Observed molecular weight by Western-blot: 50-54 kDa

Preparation

This antibody was obtained by immunization of TOM1 recombinant protein (Accession Number: BC005144). Purification method: Antigen affinity purified.

Formulation

PBS with 0.1% sodium azide and 50% glycerol pH 7.3.

Storage

Store at -20°C. DO NOT ALIQUOT

Clonality

Polyclonal

Ig Type

Rabbit IgG

Applications

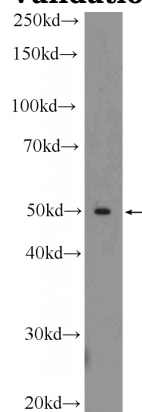
ELISA, WB

Dilutions

Recommended Dilution:

WB: 1:500-1:5000

Validations



mouse liver tissue were subjected to SDS PAGE followed by western blot with Catalog No:116169 (TOM1 Antibody) at dilution of 1:1000.