

# TIN2 antibody



Catalog Number: 116143

## Product name

TIN2 antibody

## Specificity

Human, Mouse; other species not tested.

## Antibody description

TIN2 Rabbit Polyclonal antibody. Positive IF detected in HepG2 cells. Positive WB detected in mouse spleen tissue. Observed molecular weight by Western-blot: 50 kDa; 40 kDa

## Preparation

This antibody was obtained by immunization of TIN2 recombinant protein (Accession Number: NM\_001099274). Purification method: Antigen affinity purified.

## Formulation

PBS with 0.02% sodium azide and 50% glycerol pH 7.3.

## Storage

Store at -20°C. DO NOT ALIQUOT

## Clonality

Polyclonal

## Ig Type

Rabbit IgG

## Applications

ELISA, WB, IF

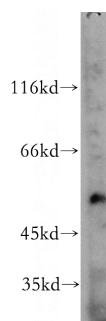
## Dilutions

Recommended Dilution:

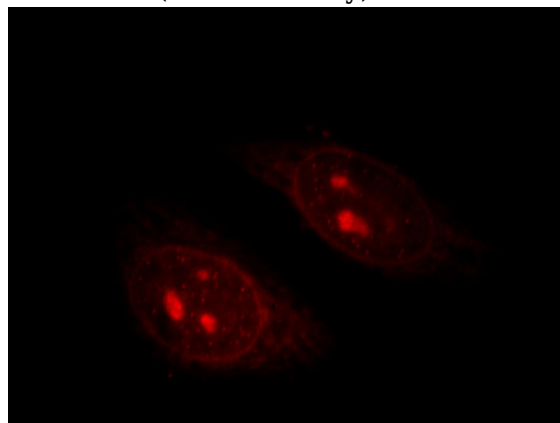
WB: 1:200-1:2000

IF: 1:10-1:100

## Validations



mouse spleen tissue were subjected to SDS PAGE followed by western blot with Catalog No:116143(TIN2 antibody) at dilution of 1:200



Immunofluorescent analysis of HepG2 cells, using TIN2 antibody Catalog No:116143 at 1:25 dilution and Rhodamine-labeled goat anti-rabbit IgG (red).