

THUMPD1 antibody



Catalog Number: 116113

Product name

THUMPD1 antibody

IHC: 1:20-1:200

IF: 1:50-1:500

Specificity

Human, Mouse, Rat; other species not tested.

Antibody description

THUMPD1 Rabbit Polyclonal antibody. Positive IF detected in MCF-7 cells. Positive IHC detected in human breast cancer tissue. Positive WB detected in MCF7 cells, K-562 cells. Observed molecular weight by Western-blot: 49 kDa

Preparation

This antibody was obtained by immunization of THUMPD1 recombinant protein (Accession Number: NM_001304550). Purification method: Antigen affinity purified.

Formulation

PBS with 0.02% sodium azide and 50% glycerol pH 7.3.

Storage

Store at -20°C. DO NOT ALIQUOT

Clonality

Polyclonal

Ig Type

Rabbit IgG

Applications

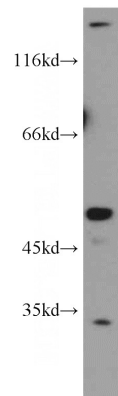
ELISA, WB, IHC, IF

Dilutions

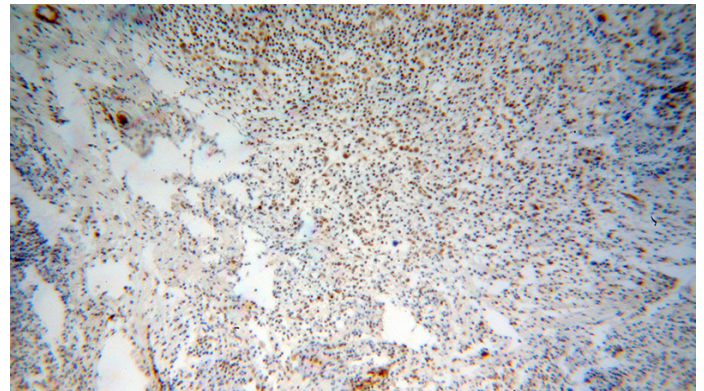
Recommended Dilution:

WB: 1:200-1:2000

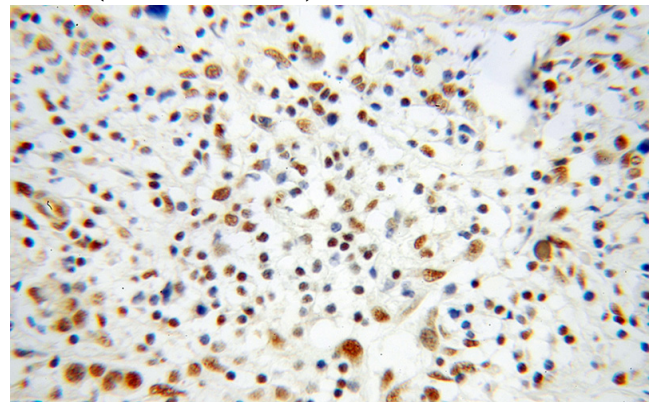
Validations



MCF7 cells were subjected to SDS PAGE followed by western blot with Catalog No:116113(THUMPD1 antibody) at dilution of 1:1000



Immunohistochemical of paraffin-embedded human breast cancer using Catalog No:116113(THUMPD1 antibody) at dilution of 1:100 (under 10x lens)

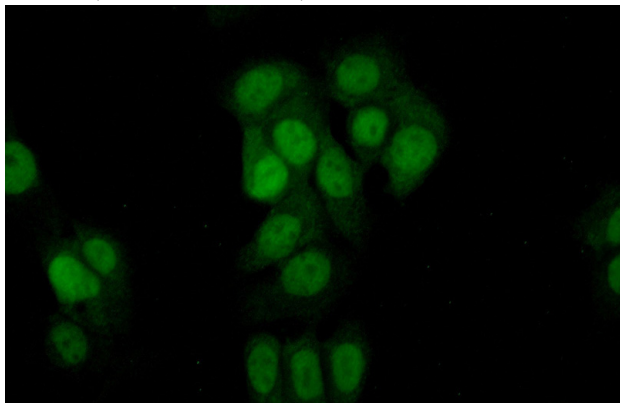


THUMPD1 antibody



Catalog Number: 116113

Immunohistochemical of paraffin-embedded human breast cancer using Catalog No:116113(THUMPD1 antibody) at dilution of 1:100 (under 40x lens)



Immunofluorescent analysis of (10% Formaldehyde) fixed MCF-7 cells using Catalog No:116113(THUMPD1 Antibody) at dilution of 1:50 and Alexa Fluor 488-conjugated AffiniPure Goat Anti-Rabbit IgG(H+L)