

# TMEM16A/DOG1 antibody



Catalog Number: 116104

## Product name

TMEM16A/DOG1 antibody

## Specificity

Human, Rat; other species not tested.

## Antibody description

TMEM16A/DOG1 Rabbit Polyclonal antibody. Positive IHC detected in stromal tumor tissue, human breast cancer tissue, human colon cancer tissue, human hepat°Cirrhosis tissue, human stomach cancer tissue.

## Preparation

This antibody was obtained by immunization of TMEM16A/DOG1 recombinant protein (Accession Number: BC027590). Purification method: Antigen affinity purified.

## Formulation

PBS with 0.1% sodium azide and 50% glycerol pH 7.3.

## Storage

Store at -20°C. DO NOT ALIQUOT

## Clonality

Polyclonal

## Ig Type

Rabbit IgG

## Applications

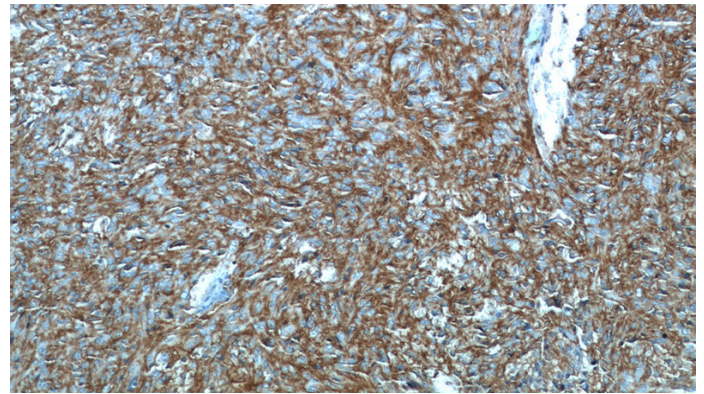
ELISA, IHC

## Dilutions

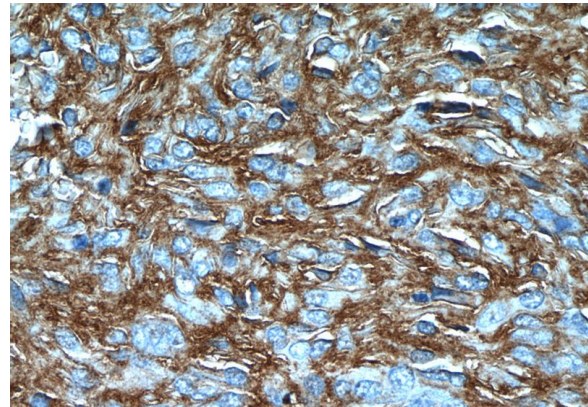
Recommended Dilution:

IHC: 1:20-1:200

## Validations



Immunohistochemistry of paraffin-embedded stromal tumor tissue slide using Catalog No:116104(ANO1,DOG1 Antibody) at dilution of 1:50 (under 10x lens)



Immunohistochemistry of paraffin-embedded stromal tumor tissue slide using Catalog No:116104(ANO1,DOG1 Antibody) at dilution of 1:50 (under 40x lens)