

# TMEM165 antibody



Catalog Number: 116102

## Product name

TMEM165 antibody

IP: 1:500-1:5000

IF: 1:20-1:200

## Specificity

Human, Mouse, Rat; other species not tested.

## Antibody description

TMEM165 Rabbit Polyclonal antibody. Positive IP detected in HeLa cells. Positive WB detected in Jurkat cells, HeLa cells. Positive IF detected in HepG2 cells. Observed molecular weight by Western-blot: 35-40 kDa

## Preparation

This antibody was obtained by immunization of TMEM165 recombinant protein (Accession Number: BC003545). Purification method: Antigen affinity purified.

## Formulation

PBS with 0.02% sodium azide and 50% glycerol pH 7.3.

## Storage

Store at -20°C. DO NOT ALIQUOT

## Clonality

Polyclonal

## Ig Type

Rabbit IgG

## Applications

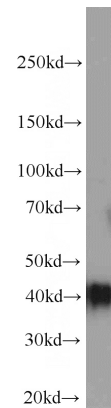
ELISA, IF, IP, WB

## Dilutions

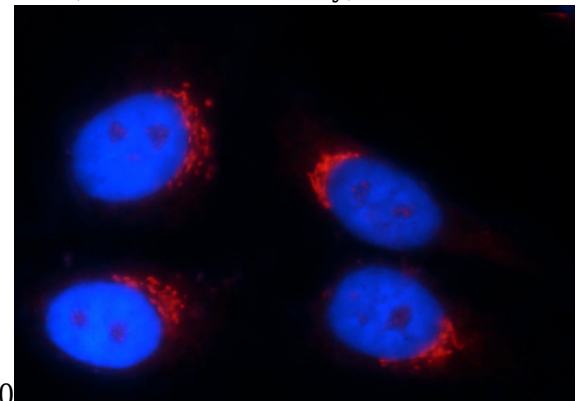
Recommended Dilution:

WB: 1:1000-1:10000

## Validations

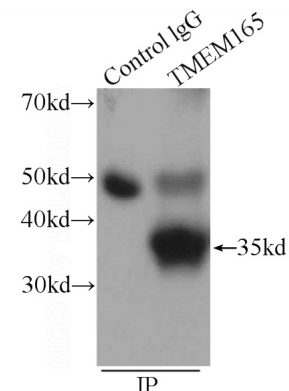


Jurkat cells were subjected to SDS PAGE followed by western blot with Catalog No:116102(TMEM165 antibody) at dilution of



1:3000

Immunofluorescent analysis of HepG2 cells using Catalog No:116102(TMEM165 Antibody) at dilution of 1:100 and Rhodamine-labeled goat anti-



rabbit IgG

IP Result of anti-TMEM165 (IP:Catalog

# TMEM165 antibody



Catalog Number: 116102

---

No:116102, 4ug; Detection:Catalog No:116102

1:1000) with HeLa cells lysate 3440ug.