

# TMEFF2 antibody



Catalog Number: 116089

## Product name

TMEFF2 antibody

## Specificity

Human, Mouse, Rat; other species not tested.

## Antibody description

TMEFF2 Rabbit Polyclonal antibody. Positive IHC detected in human prostate cancer tissue, human prostate hyperplasia tissue. Positive WB detected in SH-SY5Y cells, HeLa cells, human brain tissue, PC-3 cells. Observed molecular weight by Western-blot: 45-48 kDa

## Preparation

This antibody was obtained by immunization of TMEFF2 recombinant protein (Accession Number: NM\_016192). Purification method: Antigen affinity purified.

## Formulation

PBS with 0.1% sodium azide and 50% glycerol pH 7.3.

## Storage

Store at -20°C. DO NOT ALIQUOT

## Clonality

Polyclonal

## Ig Type

Rabbit IgG

## Applications

ELISA, WB, IHC

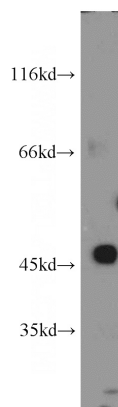
## Dilutions

Recommended Dilution:

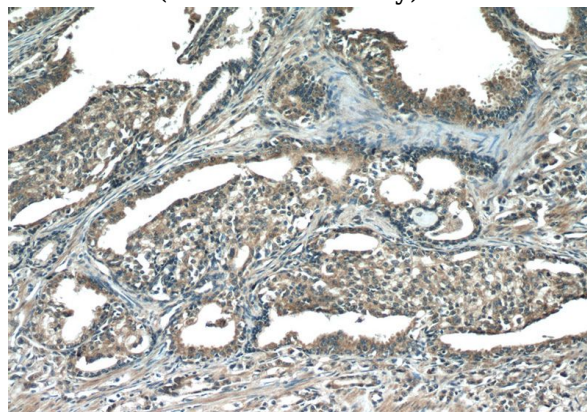
WB: 1:200-1:2000

IHC: 1:20-1:200

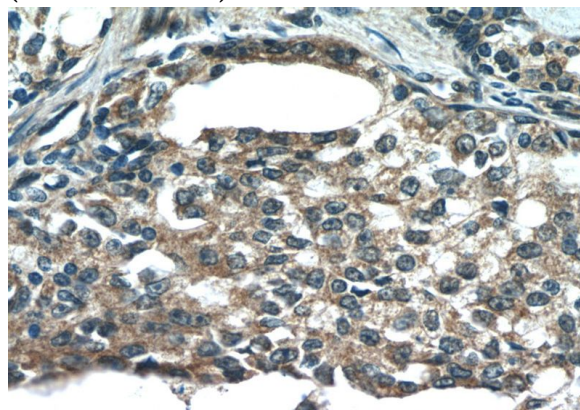
## Validations



SH-SY5Y cells were subjected to SDS PAGE followed by western blot with Catalog No:116089(TMEFF2 antibody) at dilution of 1:300



Immunohistochemistry of paraffin-embedded human prostate cancer tissue slide using Catalog No:116089(TMEFF2 Antibody) at dilution of 1:100 (under 10x lens)



Immunohistochemistry of paraffin-embedded human prostate cancer tissue slide using Catalog

# TMEFF2 antibody



Catalog Number: 116089

---

No:116089(TMEFF2 Antibody) at dilution of 1:100 (under 40x lens)