

# TK1 antibody



Catalog Number: 116067

## Product name

IP: 1:200-1:1000

TK1 antibody

IHC: 1:20-1:200

## Specificity

IF: 1:10-1:100

Human, Mouse, Rat; other species not tested.

## Validations

## Antibody description

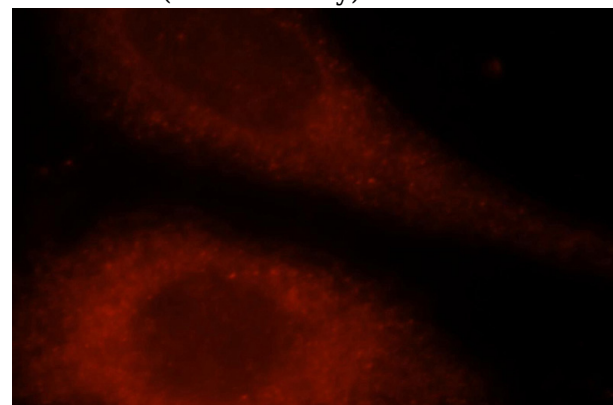


TK1 Rabbit Polyclonal antibody. Positive IP detected in HEK-293 cells. Positive WB detected in HEK-293 cells, MCF7 cells. Positive IF detected in Hela cells. Positive IHC detected in human breast cancer tissue. Observed molecular weight by Western-blot: 25 kDa

HEK-293 cells were subjected to SDS PAGE followed by western blot with Catalog No:116067(TK1 antibody) at dilution of 1:300

## Preparation

This antibody was obtained by immunization of TK1 recombinant protein (Accession Number: NM\_003258). Purification method: Antigen affinity purified.



## Formulation

PBS with 0.02% sodium azide and 50% glycerol pH 7.3.

Immunofluorescent analysis of Hela cells, using TK1 antibody Catalog No:116067 at 1:25 dilution and Rhodamine-labeled goat anti-rabbit IgG (red).

## Storage

Store at -20°C. DO NOT ALIQUOT

## Clonality

Polyclonal

## Ig Type

Rabbit IgG

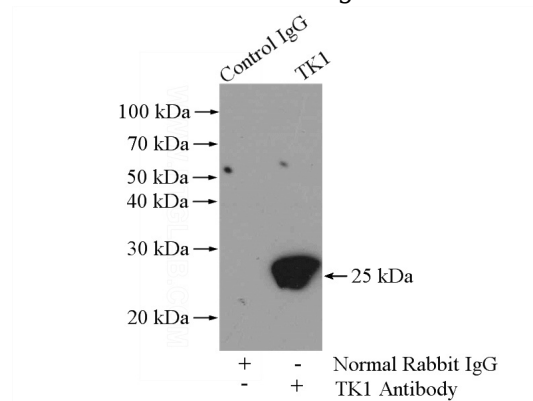
## Applications

ELISA, WB, IF, IHC, IP

## Dilutions

Recommended Dilution:

WB: 1:200-1:2000

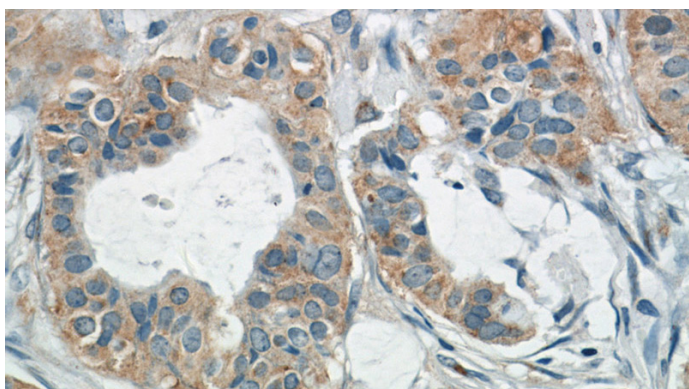


IP Result of anti-TK1 (IP:Catalog No:116067, 4ug; Detection:Catalog No:116067 1:300) with HEK-293 cells lysate 2000ug.

# TK1 antibody

Catalog Number: 116067

---



Immunohistochemistry of paraffin-embedded human breast cancer tissue slide using Catalog No:116067(TK1 Antibody) at dilution of 1:50 (under 40x lens)