

THOP1 antibody

Catalog Number: 116051

Product name

THOP1 antibody

IP: 1:200-1:2000

IHC: 1:20-1:200

Specificity

Human, Mouse, Rat; other species not tested.

Antibody description

THOP1 Rabbit Polyclonal antibody. Positive WB detected in human placenta tissue. Positive IP detected in human placenta tissue. Positive IHC detected in human colon cancer tissue. Observed molecular weight by Western-blot: 79 kDa

Preparation

This antibody was obtained by immunization of THOP1 recombinant protein (Accession Number: NM_003249). Purification method: Antigen affinity purified.

Formulation

PBS with 0.1% sodium azide and 50% glycerol pH 7.3.

Storage

Store at -20°C. DO NOT ALIQUOT

Clonality

Polyclonal

Ig Type

Rabbit IgG

Applications

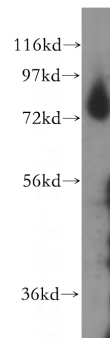
ELISA, WB, IHC, IP

Dilutions

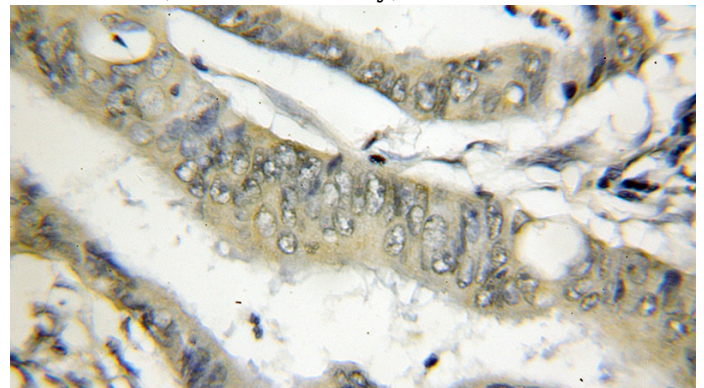
Recommended Dilution:

WB: 1:500-1:5000

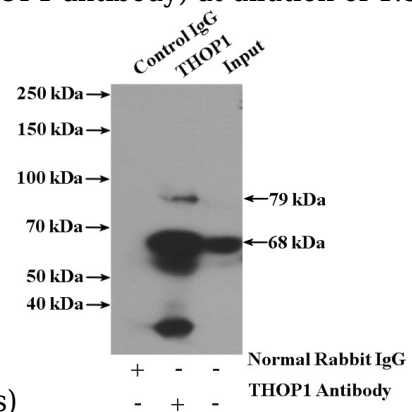
Validations



human placenta tissue were subjected to SDS PAGE followed by western blot with Catalog No:116051(THOP1 antibody) at dilution of 1:500



Immunohistochemical of paraffin-embedded human colon cancer using Catalog No:116051(THOP1 antibody) at dilution of 1:50



(under 10x lens)

IP Result of anti-THOP1 (IP:Catalog No:116051, 4ug; Detection:Catalog No:116051 1:500) with

THOP1 antibody



Catalog Number: 116051

human placenta tissue lysate 1520ug.