

# Thioredoxin antibody



Catalog Number: 116044

## Product name

Thioredoxin antibody

## Specificity

Human, Mouse, Rat; other species not tested.

## Antibody description

Thioredoxin Rabbit Polyclonal antibody. Positive WB detected in Jurkat cells, A2780 cells, HeLa cells, human brain tissue, human liver tissue, mouse liver tissue, rat brain tissue. Positive IP detected in Jurkat cells. Positive FC detected in HeLa cells. Positive IHC detected in human liver tissue, human cervical cancer tissue, human skeletal muscle tissue. Positive IF detected in HeLa cells. Observed molecular weight by Western-blot: 12 kDa

## Preparation

This antibody was obtained by immunization of Thioredoxin recombinant protein (Accession Number: NM\_003329). Purification method: Antigen affinity purified.

## Formulation

PBS with 0.02% sodium azide and 50% glycerol pH 7.3.

## Storage

Store at -20°C. DO NOT ALIQUOT

## Clonality

Polyclonal

## Ig Type

Rabbit IgG

## Applications

ELISA, IHC, IF, FC, IP, WB

## Dilutions

Recommended Dilution:

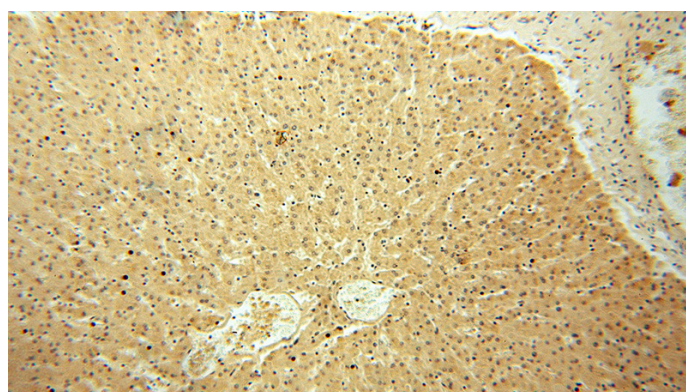
WB: 1:1000-1:10000

IP: 1:200-1:1000

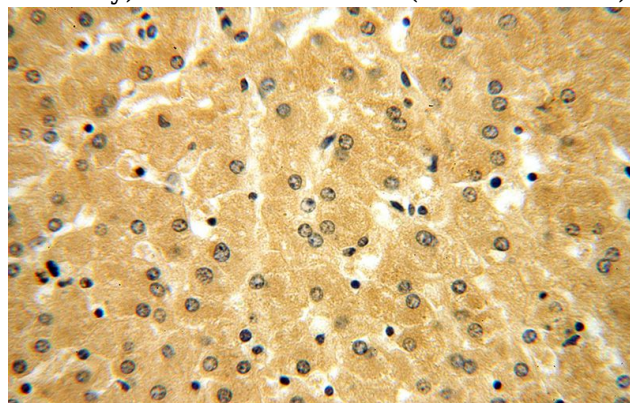
IHC: 1:20-1:200

IF: 1:20-1:200

## Validations



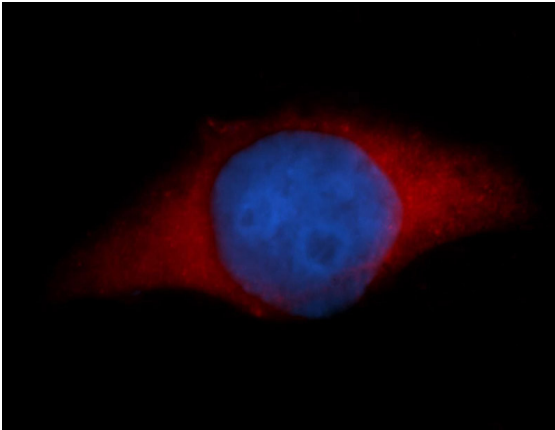
Immunohistochemical of paraffin-embedded human liver using Catalog No:116044(TXN antibody) at dilution of 1:100 (under 10x lens)



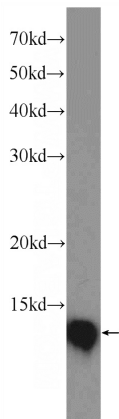
Immunohistochemical of paraffin-embedded human liver using Catalog No:116044(TXN antibody) at dilution of 1:100 (under 40x lens)

# Thioredoxin antibody

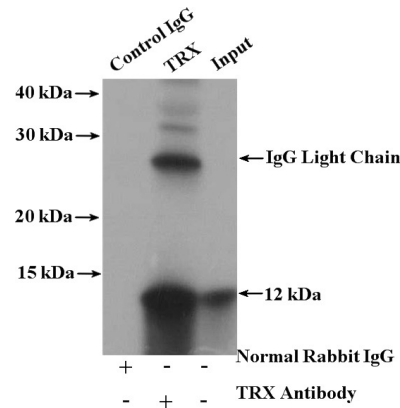
Catalog Number: 116044



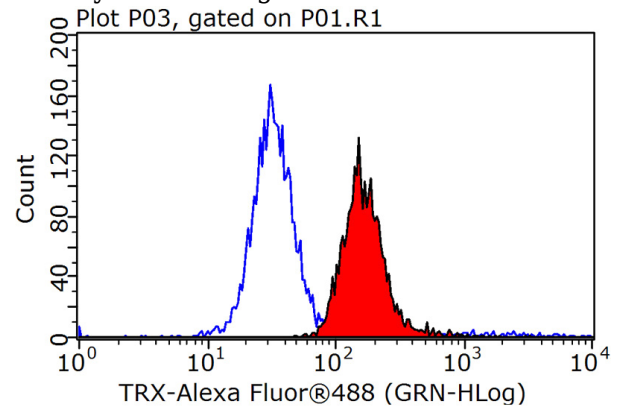
Immunofluorescent analysis of HeLa cells, using TXN antibody Catalog No:116044 at 1:50 dilution and Rhodamine-labeled goat anti-rabbit IgG (red). Blue pseudocolor = DAPI (fluorescent DNA dye).



Jurkat cells were subjected to SDS PAGE followed by western blot with Catalog No:116044(TXN Antibody) at dilution of 1:2000



IP Result of anti-TXN (IP:Catalog No:116044, 4ug; Detection:Catalog No:116044 1:300) with Jurkat cells lysate 2000ug.



$1 \times 10^6$  HeLa cells were stained with 0.2ug TXN antibody (Catalog No:116044, red) and control antibody (blue). Fixed with 90% MeOH blocked with 3% BSA (30 min). Alexa Fluor 488-conjugated AffiniPure Goat Anti-Rabbit IgG(H+L) with dilution 1:1000.