

# THAP2 antibody



Catalog Number: 116040

## Product name

THAP2 antibody

## Specificity

Human, Mouse, Rat; other species not tested.

## Antibody description

THAP2 Rabbit Polyclonal antibody. Positive IF detected in HeLa cells, HepG2 cells. Positive WB detected in HEK-293 cells, HeLa cells, human brain tissue, mouse testis tissue. Observed molecular weight by Western-blot: 26-30kd

## Preparation

This antibody was obtained by immunization of THAP2 recombinant protein (Accession Number: NM\_031435). Purification method: Antigen affinity purified.

## Formulation

PBS with 0.02% sodium azide and 50% glycerol pH 7.3.

## Storage

Store at -20°C. DO NOT ALIQUOT

## Clonality

Polyclonal

## Ig Type

Rabbit IgG

## Applications

ELISA, WB, IF

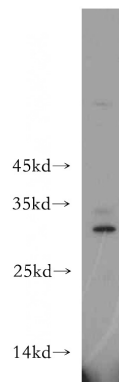
## Dilutions

Recommended Dilution:

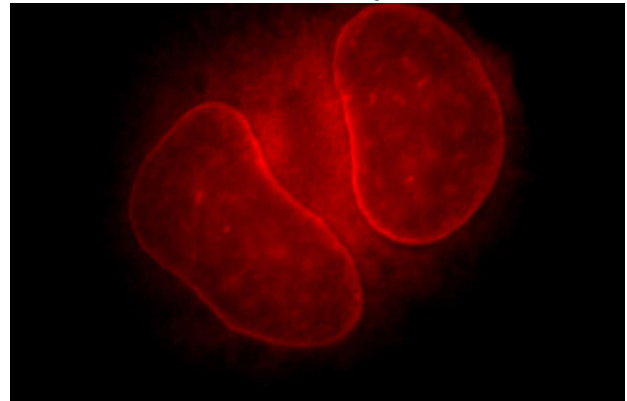
WB: 1:200-1:2000

IF: 1:10-1:100

## Validations



HEK-293 cells were subjected to SDS PAGE followed by western blot with Catalog No:116040(THAP2 antibody) at dilution of 1:600



Immunofluorescent analysis of HeLa cells, using THAP2 antibody Catalog No:116040 at 1:25 dilution and Rhodamine-labeled goat anti-rabbit IgG (red).