

THAP10 antibody



Catalog Number: 116038

Product name

THAP10 antibody

Immunogen

[Human THAP10 Recombinant protein \(His tag\)](#)

Specificity

Human, Mouse; other species not tested.

Antibody description

THAP10 Rabbit Polyclonal antibody. Positive WB detected in HeLa cells, mouse testis tissue, SMMC-7721 cells. Positive IF detected in HeLa cells. Observed molecular weight by Western-blot: 33 kDa

Preparation

This antibody was obtained by immunization of THAP10 recombinant protein (Accession Number: NM_020147). Purification method: Antigen affinity purified.

Formulation

PBS with 0.02% sodium azide and 50% glycerol pH 7.3.

Storage

Store at -20°C. DO NOT ALIQUOT

Clonality

Polyclonal

Ig Type

Rabbit IgG

Applications

ELISA, WB, IF

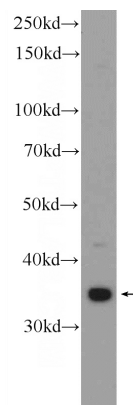
Dilutions

Recommended Dilution:

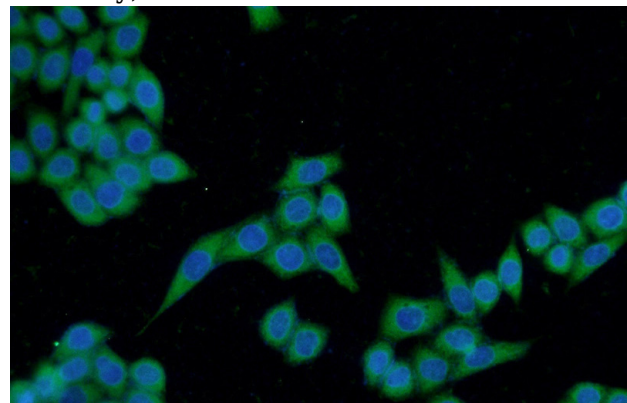
WB: 1:200-1:1000

IF: 1:20-1:200

Validations



HeLa cells were subjected to SDS PAGE followed by western blot with Catalog No:116038(THAP10 Antibody) at dilution of 1:300



Immunofluorescent analysis of HeLa cells using Catalog No:116038(THAP10 Antibody) at dilution of 1:50 and Alexa Fluor 488-conjugated AffiniPure Goat Anti-Rabbit IgG(H+L)