

# TGFBRAP1 antibody



Catalog Number: 116025

## Product name

TGFBRAP1 antibody

IHC: 1:20-1:200

IF: 1:10-1:100

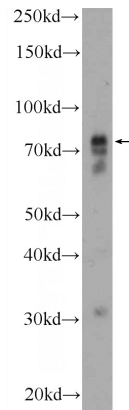
## Specificity

Human; other species not tested.

## Validations

## Antibody description

TGFBRAP1 Rabbit Polyclonal antibody. Positive WB detected in COLO 320 cells. Positive IF detected in HepG2 cells. Positive IHC detected in human kidney tissue. Observed molecular weight by Western-blot: 80 kDa



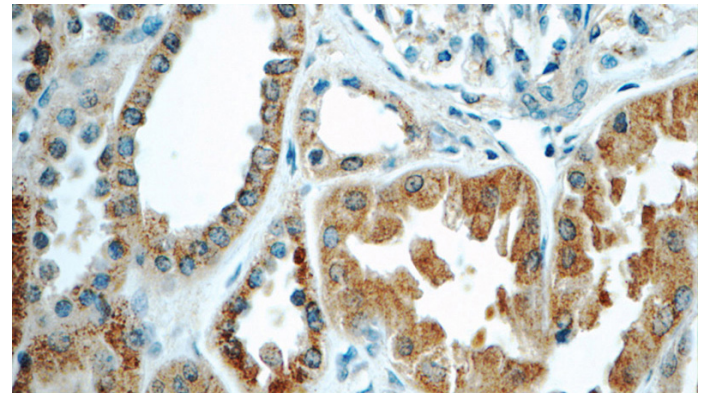
## Preparation

This antibody was obtained by immunization of TGFBRAP1 recombinant protein (Accession Number: XM\_047446423). Purification method: Antigen affinity purified.

COLO 320 cells were subjected to SDS PAGE followed by western blot with Catalog No:116025(TGFBRAP1 Antibody) at dilution of 1:300

## Formulation

PBS with 0.1% sodium azide and 50% glycerol pH 7.3.



## Storage

Store at -20°C. DO NOT ALIQUOT

## Clonality

Polyclonal

## Ig Type

Rabbit IgG

## Applications

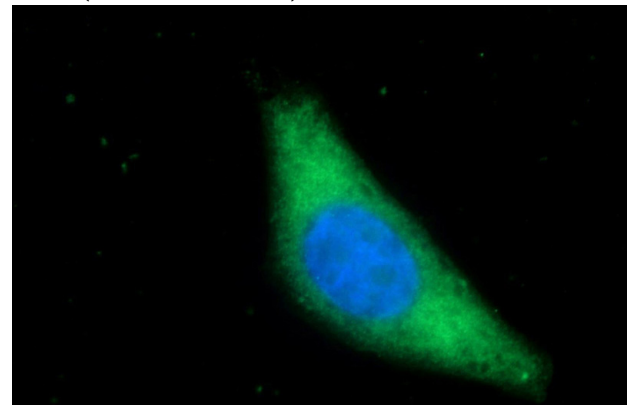
ELISA, WB, IHC, IF

## Dilutions

Recommended Dilution:

WB: 1:200-1:1000

Immunohistochemistry of paraffin-embedded human kidney tissue slide using Catalog No:116025(TGFBRAP1 Antibody) at dilution of 1:50 (under 40x lens)



# TGFBRAP1 antibody



Catalog Number: 116025

---

Immunofluorescent analysis of HepG2 cells using  
Catalog No:116025(TGFBRAP1 Antibody) at

dilution of 1:25 and Alexa Fluor 488-conjugated  
AffiniPure Goat Anti-Rabbit IgG(H+L)