

TFII I antibody

Catalog Number: 116012

Product name

TFII I antibody

WB: 1:200-1:2000

IHC: 1:20-1:200

Specificity

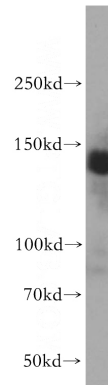
Human, Mouse, Rat; other species not tested.

IF: 1:20-1:200

Antibody description

TFII I Rabbit Polyclonal antibody. Positive WB detected in HEK-293 cells, HeLa cells, Jurkat cells. Positive FC detected in HeLa cells. Positive IHC detected in human ovary tumor tissue, human colon cancer tissue. Positive IF detected in HeLa cells. Observed molecular weight by Western-blot: 135 kDa

Validations



Preparation

This antibody was obtained by immunization of TFII I recombinant protein (Accession Number: NM_001280800). Purification method: Antigen affinity purified.

HEK-293 cells were subjected to SDS PAGE followed by western blot with Catalog No:116012 (GTF2I antibody) at dilution of 1:800

Formulation

PBS with 0.1% sodium azide and 50% glycerol pH 7.3.

Storage

Store at -20°C. DO NOT ALIQUOT

Clonality

Polyclonal

Ig Type

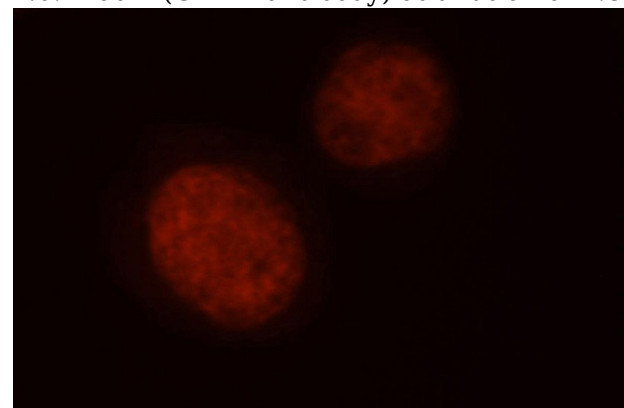
Rabbit IgG

Applications

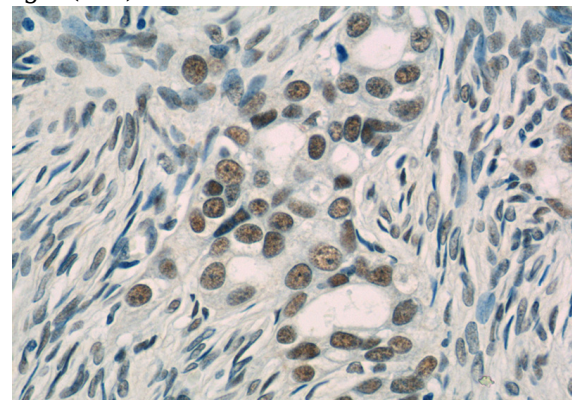
ELISA, WB, IF, FC, IHC

Dilutions

Recommended Dilution:



Immunofluorescent analysis of HeLa cells, using GTF2I antibody Catalog No:116012 at 1:50 dilution and Rhodamine-labeled goat anti-rabbit IgG (red).

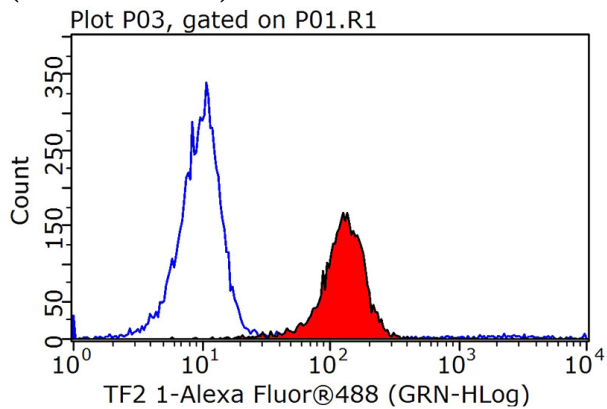


TFII I antibody



Catalog Number: 116012

Immunohistochemistry of paraffin-embedded human ovary tumor tissue slide using Catalog No:116012(GTF2I Antibody) at dilution of 1:50 (under 40x lens)



1X10⁶ HeLa cells were stained with 0.2ug GTF2I antibody (Catalog No:116012, red) and control antibody (blue). Fixed with 90% MeOH blocked with 3% BSA (30 min). Alexa Fluor 488-conjugated AffiniPure Goat Anti-Rabbit IgG(H+L) with dilution 1:1000.