

TFEC antibody

Catalog Number: 116010

Product name

TFEC antibody

IP: 1:200-1:2000

IHC: 1:20-1:200

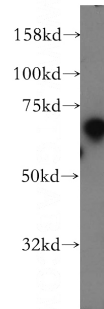
Specificity

Human, Mouse, Rat; other species not tested.

Antibody description

TFEC Rabbit Polyclonal antibody. Positive IHC detected in human colon cancer tissue. Positive WB detected in mouse testis tissue, COLO 320 cells. Positive IP detected in mouse testis tissue. Observed molecular weight by Western-blot: 65 kDa

Validations



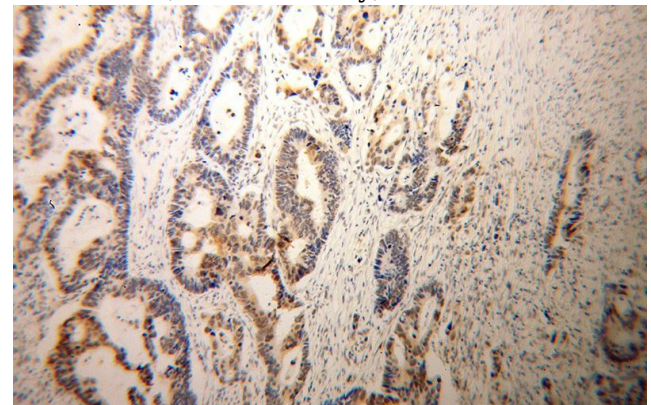
Preparation

This antibody was obtained by immunization of TFEC recombinant protein (Accession Number: BC029891). Purification method: Antigen affinity purified.

mouse testis tissue were subjected to SDS PAGE followed by western blot with Catalog No:116010(TFEC antibody) at dilution of 1:300

Formulation

PBS with 0.02% sodium azide and 50% glycerol pH 7.3.



Storage

Store at -20°C. DO NOT ALIQUOT

Clonality

Polyclonal

Immunohistochemical of paraffin-embedded human colon cancer using Catalog No:116010(TFEC antibody) at dilution of 1:100 (under 10x lens)

Ig Type

Rabbit IgG

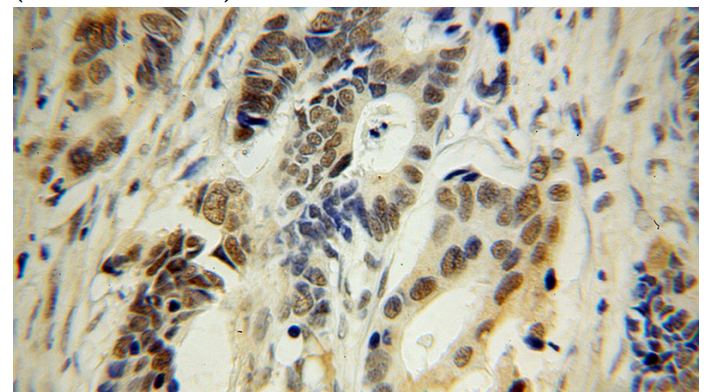
Applications

ELISA, WB, IHC, IP

Dilutions

Recommended Dilution:

WB: 1:500-1:5000



Immunohistochemical of paraffin-embedded

TFEC antibody

Catalog Number: 116010

human colon cancer using Catalog No:116010(TFEC antibody) at dilution of 1:100 (under 40x lens)

IP Result of anti-TFEC (IP:Catalog No:116010, 4ug; Detection:Catalog No:116010 1:500) with mouse testis tissue lysate 4000ug.

