

TFEB antibody



Catalog Number: 116009

Product name

TFEB antibody

Recommended Dilution:

WB: 1:500-1:5000

Specificity

Human, Mouse, Rat; other species not tested.

IP: 1:500-1:5000

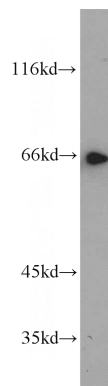
IHC: 1:20-1:200

Antibody description

TFEB Rabbit Polyclonal antibody. Positive WB detected in Jurkat cells, HeLa cells, human placenta tissue, mouse brain tissue, NIH/3T3 cells, rat brain tissue. Positive IP detected in NIH/3T3 cells. Positive IHC detected in human renal cell carcinoma tissue, human placenta tissue. Positive IF detected in HeLa cells. Observed molecular weight by Western-blot: 65-70 kDa

IF: 1:20-1:200

Validations



Jurkat cells were subjected to SDS PAGE followed by western blot with Catalog No:116009(TFEB antibody) at dilution of 1:1000

Preparation

This antibody was obtained by immunization of TFEB recombinant protein (Accession Number: XM_011514915). Purification method: Antigen affinity purified.

Formulation

PBS with 0.02% sodium azide and 50% glycerol pH 7.3.

Storage

Store at -20°C. DO NOT ALIQUOT

Clonality

Polyclonal

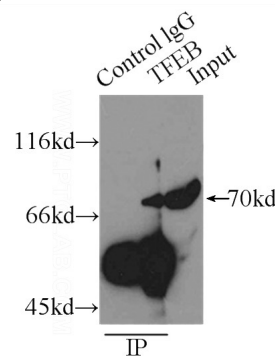
Ig Type

Rabbit IgG

Applications

ELISA, WB, IHC, IF, IP

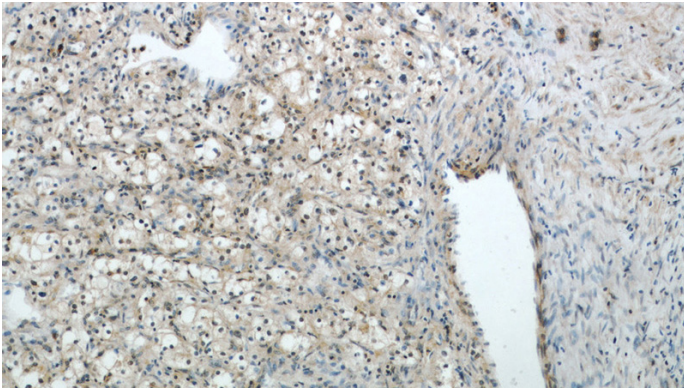
Dilutions



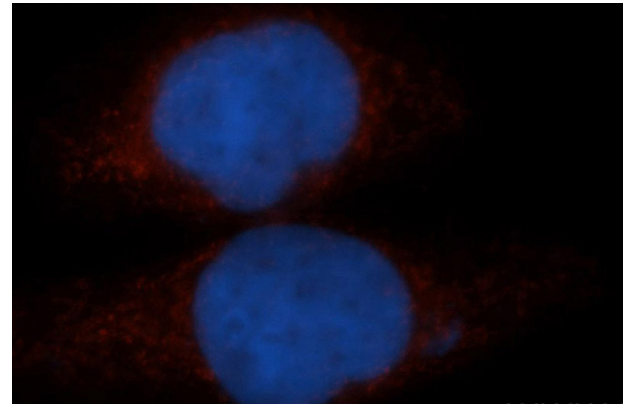
IP Result of anti-TFEB (IP:Catalog No:116009, 3ug; Detection:Catalog No:116009 1:1000) with NIH/3T3 cells lysate 3300ug.

TFEB antibody

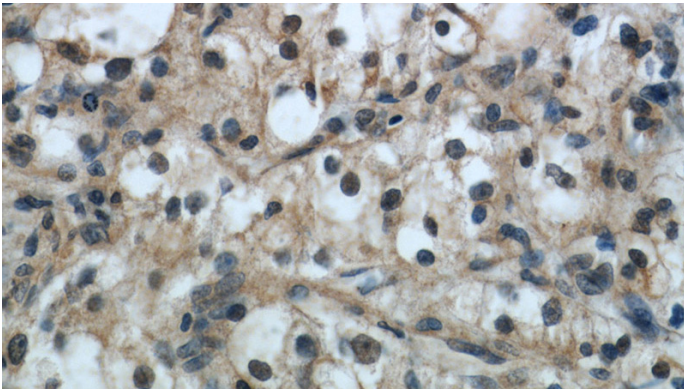
Catalog Number: 116009



Immunohistochemical of paraffin-embedded human renal cell carcinoma using Catalog No:116009(TFEB antibody) at dilution of 1:50 (under 40x lens)



Immunohistochemical of paraffin-embedded human renal cell carcinoma using Catalog No:116009(TFEB antibody) at dilution of 1:50 (under 10x lens)



Immunofluorescent analysis of HeLa cells, using TFEB antibody Catalog No:116009 at 1:50 dilution and Rhodamine-labeled goat anti-rabbit IgG (red). Blue pseudocolor = DAPI (fluorescent DNA dye).