

TFAP2C antibody



Catalog Number: 116000

Product name

TFAP2C antibody

WB: 1:500-1:5000

IP: 1:500-1:5000

Specificity

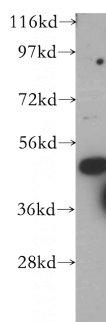
Human, Mouse, Rat; other species not tested.

IHC: 1:20-1:200

Antibody description

TFAP2C Rabbit Polyclonal antibody. Positive IP detected in HeLa cells. Positive WB detected in HeLa cells, human placenta tissue, MCF7 cells. Positive IHC detected in human breast cancer tissue. Positive FC detected in MCF-7 cells. Observed molecular weight by Western-blot: 50 kDa

Validations



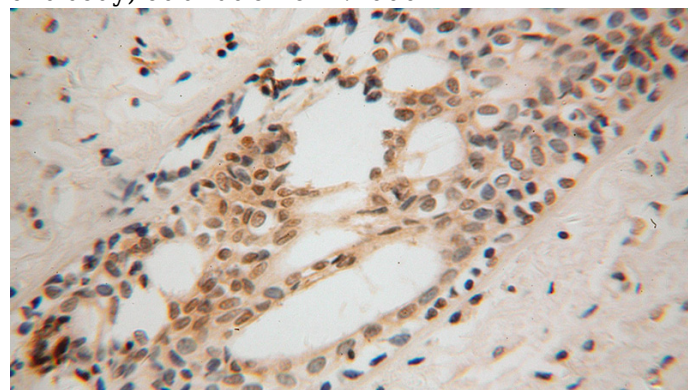
Preparation

This antibody was obtained by immunization of TFAP2C recombinant protein (Accession Number: NM_003222). Purification method: Antigen affinity purified.

HeLa cells were subjected to SDS PAGE followed by western blot with Catalog No:116000(TFAP2C antibody) at dilution of 1:1000

Formulation

PBS with 0.02% sodium azide and 50% glycerol pH 7.3.



Storage

Store at -20°C. DO NOT ALIQUOT

Clonality

Polyclonal

Immunohistochemical of paraffin-embedded human breast cancer using Catalog No:116000(TFAP2C antibody) at dilution of 1:100 (under 40x lens)

Ig Type

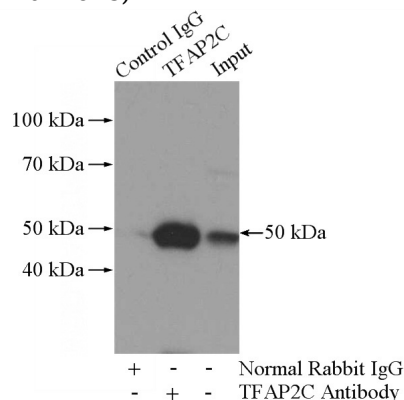
Rabbit IgG

Applications

ELISA, WB, IHC, FC, IP

Dilutions

Recommended Dilution:

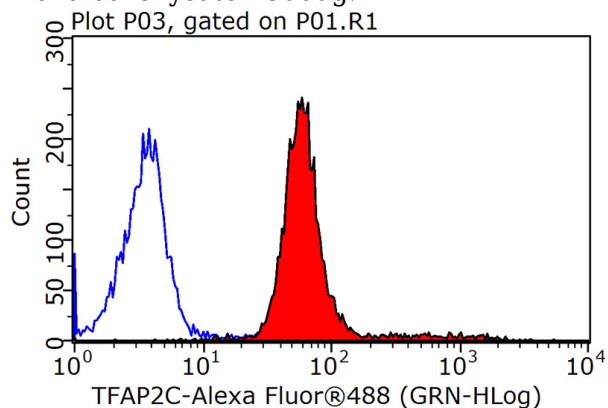


TFAP2C antibody



Catalog Number: 116000

IP Result of anti-TFAP2C (IP:Catalog No:116000, 4ug; Detection:Catalog No:116000 1:1000) with HeLa cells lysate 2800ug.



1X10⁶ MCF-7 cells were stained with 0.2ug TFAP2C antibody (Catalog No:116000, red) and control antibody (blue). Fixed with 90% MeOH blocked with 3% BSA (30 min). Alexa Fluor 488-conjugated AffiniPure Goat Anti-Rabbit IgG(H+L) with dilution 1:1500.