

# TAB2 antibody

Catalog Number: 115965

## Product name

TAB2 antibody

WB: 1:200-1:2000

IP: 1:200-1:2000

## Specificity

Human, Mouse, Rat; other species not tested.

IHC: 1:20-1:200

IF: 1:20-1:200

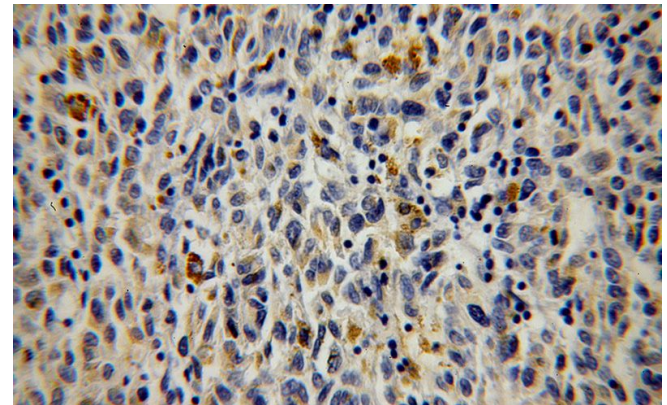
## Antibody description

TAB2 Rabbit Polyclonal antibody. Positive WB detected in HepG2 cells, human liver tissue, L02 cells. Positive IP detected in HepG2 cells. Positive IF detected in HepG2 cells. Positive IHC detected in human malignant melanoma tissue. Positive FC detected in HepG2 cells. Observed molecular weight by Western-blot: 77 kDa

## Validations

### Preparation

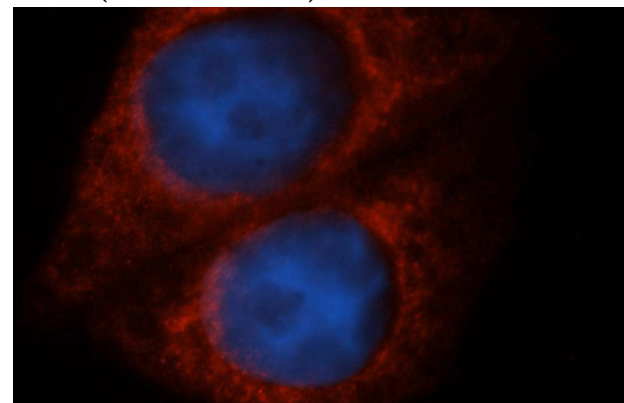
This antibody was obtained by immunization of TAB2 recombinant protein (Accession Number: XM\_047418490). Purification method: Antigen affinity purified.



Immunohistochemical of paraffin-embedded human malignant melanoma using Catalog No:115965(MAP3K7IP2 antibody) at dilution of 1:100 (under 40x lens)

### Formulation

PBS with 0.02% sodium azide and 50% glycerol pH 7.3.



Immunofluorescent analysis of HepG2 cells, using MAP3K7IP2 antibody Catalog No:115965 at 1:50 dilution and Rhodamine-labeled goat anti-rabbit IgG (red). Blue pseudocolor = DAPI (fluorescent

### Storage

Store at -20°C. DO NOT ALIQUOT

### Clonality

Polyclonal

### Ig Type

Rabbit IgG

### Applications

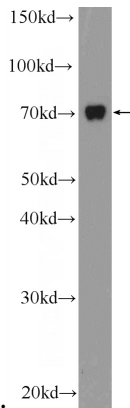
ELISA, IHC, IF, WB, FC, IP

### Dilutions

Recommended Dilution:

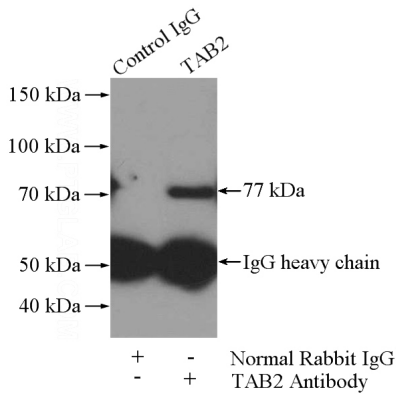
# TAB2 antibody

Catalog Number: 115965



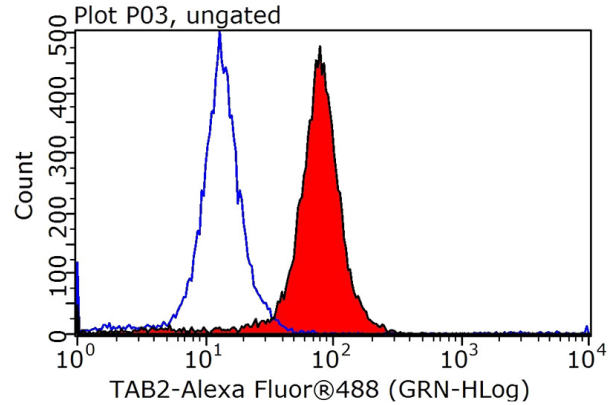
DNA dye).

HepG2 cells were subjected to SDS PAGE followed by western blot with Catalog No:115965(MAP3K7IP2 Antibody) at dilution of



1:600

IP Result of anti-MAP3K7IP2 (IP:Catalog No:115965, 4ug; Detection:Catalog No:115965 1:600) with HepG2 cells lysate 3600ug.



1X10<sup>6</sup> HepG2 cells were stained with 0.2ug MAP3K7IP2 antibody (Catalog No:115965, red) and control antibody (blue). Fixed with 90% MeOH blocked with 3% BSA (30 min). Alexa Fluor 488-conjugated AffiniPure Goat Anti-Rabbit IgG(H+L) with dilution 1:1000.