

TEM1 antibody



Catalog Number: 115942

Product name

TEM1 antibody

Specificity

Human, Mouse, Rat; other species not tested.

Antibody description

TEM1 Rabbit Polyclonal antibody. Positive WB detected in HeLa cells, A375 cells, COLO 320 cells, HEK-293 cells, mouse colon tissue, mouse heart tissue, mouse stomach tissue, NIH/3T3 cells, SH-SY5Y cells. Positive FC detected in HeLa cells. Positive IHC detected in human lung cancer tissue, human gliomas tissue, human renal cell carcinoma tissue. Observed molecular weight by Western-blot: 81 kDa

Preparation

This antibody was obtained by immunization of TEM1 recombinant protein (Accession Number: NM_020404). Purification method: Antigen affinity purified.

Formulation

PBS with 0.02% sodium azide and 50% glycerol pH 7.3.

Storage

Store at -20°C. DO NOT ALIQUOT

Clonality

Polyclonal

Ig Type

Rabbit IgG

Applications

ELISA, IHC, FC, WB

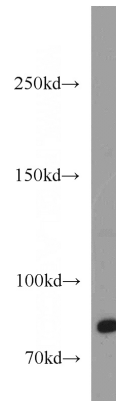
Dilutions

Recommended Dilution:

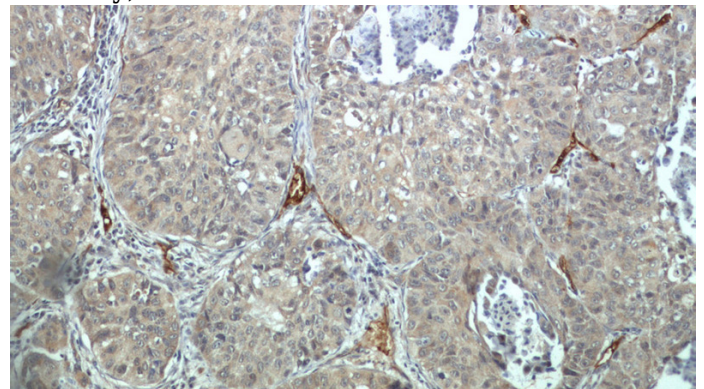
WB: 1:200-1:2000

IHC: 1:20-1:200

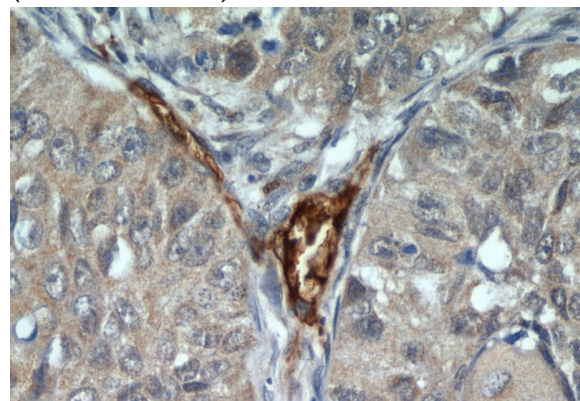
Validations



HeLa cells were subjected to SDS PAGE followed by western blot with Catalog No:115942(CD248 antibody) at dilution of 1:500



Immunohistochemical of paraffin-embedded human lung cancer using Catalog No:115942(CD248 antibody) at dilution of 1:100 (under 10x lens)

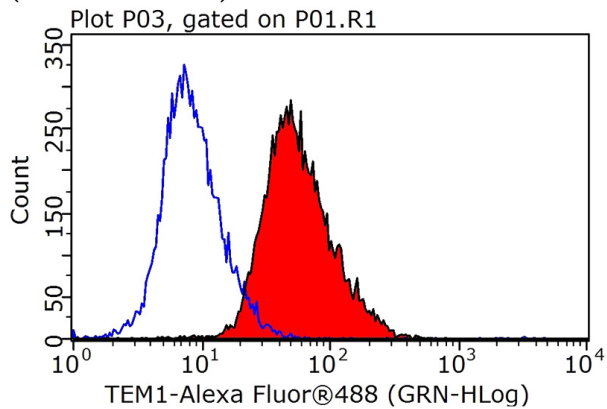


TEM1 antibody



Catalog Number: 115942

Immunohistochemical of paraffin-embedded human lung cancer using Catalog No:115942(CD248 antibody) at dilution of 1:100 (under 40x lens)



1X10⁶ HeLa cells were stained with 0.2ug CD248 antibody (Catalog No:115942, red) and control antibody (blue). Fixed with 90% MeOH blocked with 3% BSA (30 min). Alexa Fluor 488-conjugated AffiniPure Goat Anti-Rabbit IgG(H+L) with dilution 1:1000.