

# TCP1 antibody

Catalog Number: 115915

## Product name

TCP1 antibody

## Specificity

Human, Mouse; other species not tested.

## Antibody description

TCP1 Rabbit Polyclonal antibody. Positive IP detected in HeLa cells. Positive WB detected in MCF7 cells, HeLa cells, Jurkat cells, mouse heart tissue. Positive IHC detected in human colon tissue, human colon cancer tissue, human liver cancer tissue. Positive IF detected in HeLa cells, MCF-7 cells. Positive FC detected in HeLa cells. Observed molecular weight by Western-blot: 55-60 kDa

## Preparation

This antibody was obtained by immunization of TCP1 recombinant protein (Accession Number: NM\_030752). Purification method: Antigen affinity purified.

## Formulation

PBS with 0.02% sodium azide and 50% glycerol pH 7.3.

## Storage

Store at -20°C. DO NOT ALIQUOT

## Clonality

Polyclonal

## Ig Type

Rabbit IgG

## Applications

ELISA, WB, IF, IHC, FC, IP

## Dilutions

Recommended Dilution:

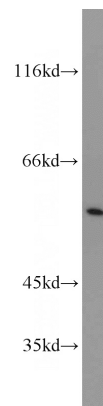
WB: 1:500-1:5000

IP: 1:200-1:1000

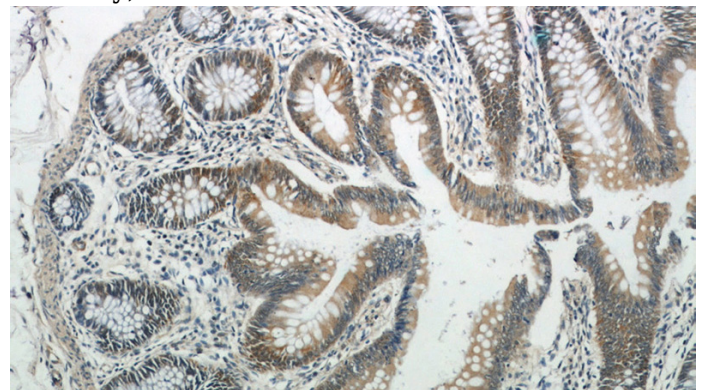
IHC: 1:20-1:200

IF: 1:10-1:100

## Validations



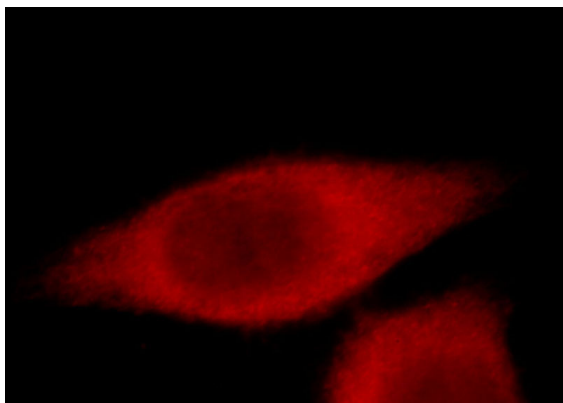
MCF7 cells were subjected to SDS PAGE followed by western blot with Catalog No:115915(TCP1 antibody) at dilution of 1:1000



Immunohistochemical of paraffin-embedded human colon using Catalog No:115915(TCP1 antibody) at dilution of 1:50 (under 10x lens)

# TCP1 antibody

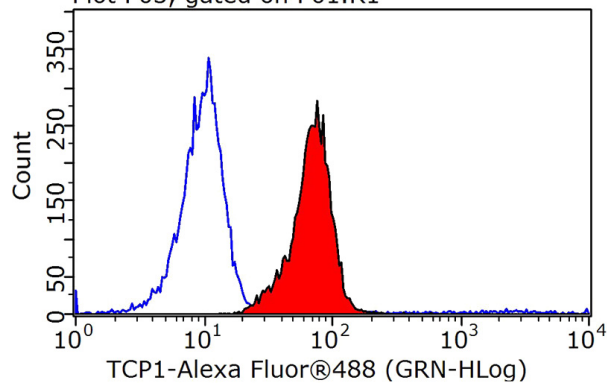
Catalog Number: 115915



Immunofluorescent analysis of HeLa cells, using TCP1 antibody Catalog No:115915 at 1:25 dilution and Rhodamine-labeled goat anti-rabbit IgG (red).

IP Result of anti-TCP1 (IP:Catalog No:115915, 4ug; Detection:Catalog No:115915 1:300) with HeLa cells lysate 1600ug.

Plot P03, gated on P01.R1



1X10<sup>6</sup> HeLa cells were stained with 0.2ug TCP1 antibody (Catalog No:115915, red) and control antibody (blue). Fixed with 90% MeOH blocked with 3% BSA (30 min). Alexa Fluor 488-conjugated AffiniPure Goat Anti-Rabbit IgG(H+L) with dilution 1:1000.

