

# TBL2 antibody

Catalog Number: 115877

## Product name

TBL2 antibody

## Specificity

Human, Mouse, Rat; other species not tested.

## Antibody description

TBL2 Rabbit Polyclonal antibody. Positive IHC detected in human pancreas cancer tissue, human heart tissue, human pancreas tissue. Positive IF detected in HepG2 cells. Positive WB detected in COLO 320 cells, HeLa cells, human placenta tissue, Jurkat cells, mouse pancreas tissue, mouse placenta tissue. Positive IP detected in COLO 320 cells. Observed molecular weight by Western-blot: 45-50kd

## Preparation

This antibody was obtained by immunization of TBL2 recombinant protein (Accession Number: NM\_012453). Purification method: Antigen affinity purified.

## Formulation

PBS with 0.1% sodium azide and 50% glycerol pH 7.3.

## Storage

Store at -20°C. DO NOT ALIQUOT

## Clonality

Polyclonal

## Ig Type

Rabbit IgG

## Applications

ELISA, WB, IHC, IF, IP

## Dilutions

Recommended Dilution:

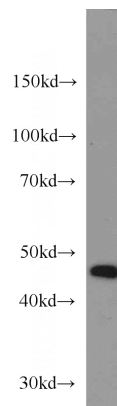
WB: 1:500-1:5000

IP: 1:200-1:2000

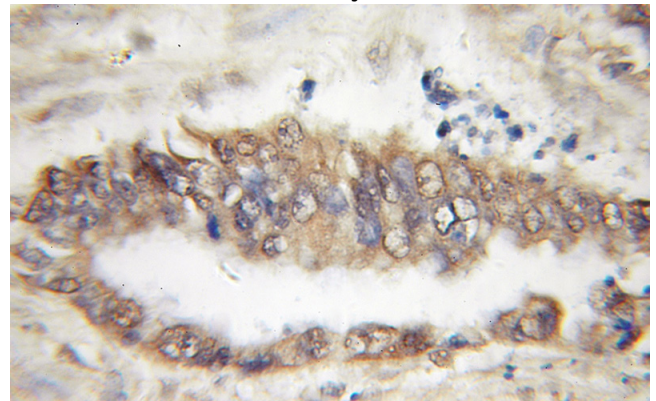
IHC: 1:20-1:200

IF: 1:10-1:100

## Validations



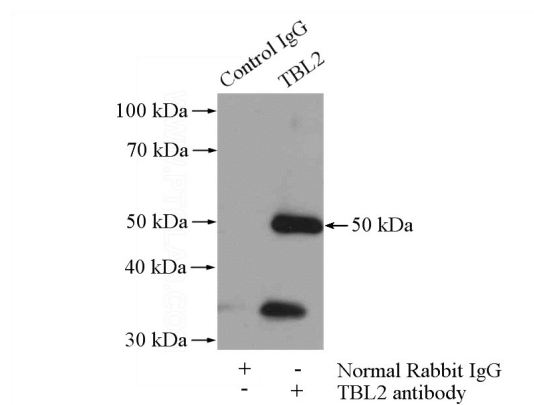
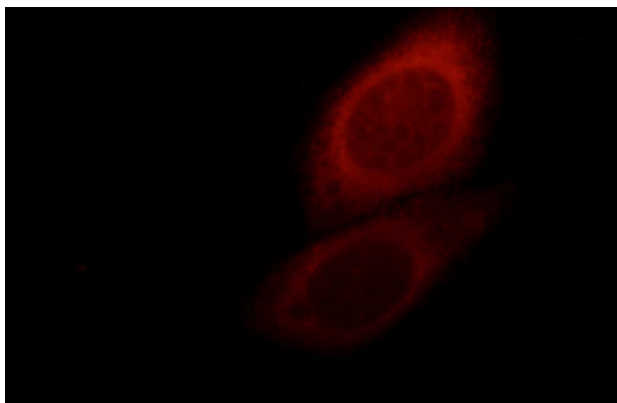
COLO 320 cells were subjected to SDS PAGE followed by western blot with Catalog No:115877(TBL2 antibody) at dilution of 1:500



Immunohistochemical of paraffin-embedded human pancreas cancer using Catalog No:115877(TBL2 antibody) at dilution of 1:50 (under 10x lens)

# TBL2 antibody

Catalog Number: 115877



Immunofluorescent analysis of HepG2 cells, using TBL2 antibody Catalog No:109111 at 1:25 dilution and Rhodamine-labeled goat anti-rabbit IgG (red).

IP Result of anti-TBL2 (IP:Catalog No:115877, 4ug; Detection:Catalog No:115877 1:800) with COLO 320 cells lysate 2400ug.