

# TBC1D22A antibody



Catalog Number: 115864

## Product name

TBC1D22A antibody

Recommended Dilution:

WB: 1:500-1:5000

## Immunogen

IHC: 1:20-1:200

## Specificity

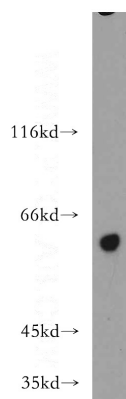
Human, Mouse, Rat; other species not tested.

IF: 1:20-1:200

## Antibody description

TBC1D22A Rabbit Polyclonal antibody. Positive IHC detected in human cervical cancer tissue, human cervix tissue, human kidney tissue. Positive IF detected in HeLa cells. Positive WB detected in HeLa cells, COLO 320 cells. Observed molecular weight by Western-blot: 59 kDa

## Validations



## Preparation

This antibody was obtained by immunization of TBC1D22A recombinant protein (Accession Number: NM\_014346). Purification method: Antigen affinity purified.

HeLa cells were subjected to SDS PAGE followed by western blot with Catalog No:115864(TBC1D22A antibody) at dilution of 1:500

## Formulation

PBS with 0.02% sodium azide and 50% glycerol pH 7.3.

## Storage

Store at -20°C. DO NOT ALIQUOT

## Clonality

Polyclonal

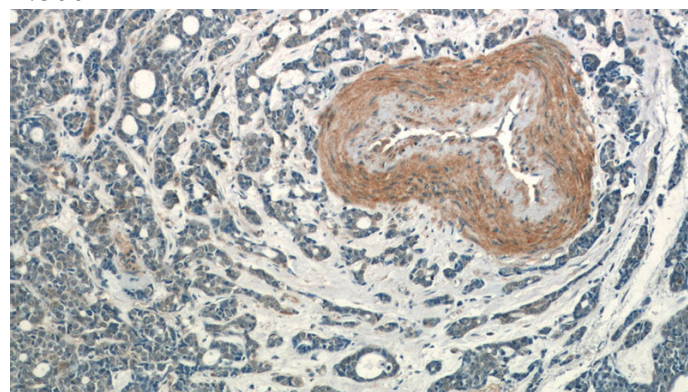
## Ig Type

Rabbit IgG

## Applications

ELISA, WB, IHC, IF

## Dilutions



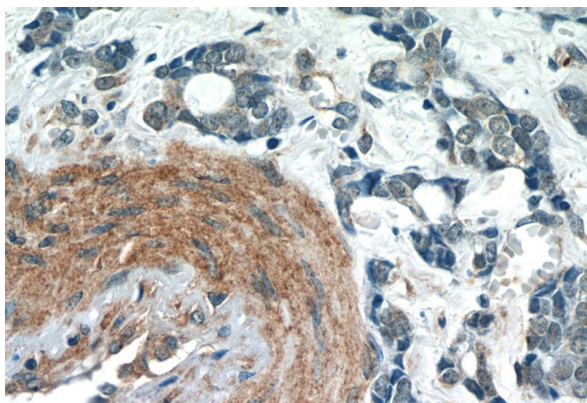
Immunohistochemistry of paraffin-embedded human cervical cancer tissue slide using Catalog No:115864(TBC1D22A Antibody) at dilution of 1:50 (under 10x lens)

# TBC1D22A antibody

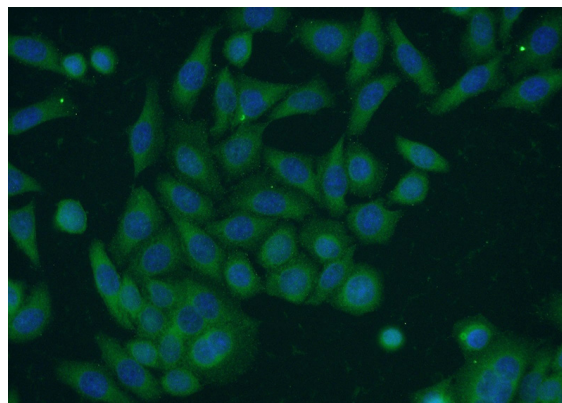


Catalog Number: 115864

---



Immunohistochemistry of paraffin-embedded human cervical cancer tissue slide using Catalog No:115864(TBC1D22A Antibody) at dilution of 1:50 (under 40x lens)



Immunofluorescent analysis of HeLa cells using Catalog No:115864(TBC1D22A Antibody) at dilution of 1:50 and Alexa Fluor 488-conjugated AffiniPure Goat Anti-Rabbit IgG(H+L)