

# TAP1 antibody



Catalog Number: 115850

## Product name

TAP1 antibody

## Specificity

Human, Mouse, Rat; other species not tested.

## Antibody description

TAP1 Rabbit Polyclonal antibody. Positive IHC detected in human pancreas cancer tissue, HeLa cells, human lung cancer tissue. Positive IF detected in HepG2 cells. Positive WB detected in HepG2 cells, human skeletal muscle tissue, mouse skeletal muscle tissue, mouse spleen tissue, Raji cells. Positive IP detected in HepG2 cells. Observed molecular weight by Western-blot: 70-81 kDa

## Preparation

This antibody was obtained by immunization of TAP1 recombinant protein (Accession Number: BC014081). Purification method: Antigen affinity purified.

## Formulation

PBS with 0.1% sodium azide and 50% glycerol pH 7.3.

## Storage

Store at -20°C. DO NOT ALIQUOT

## Clonality

Polyclonal

## Ig Type

Rabbit IgG

## Applications

ELISA, IF, WB, IHC, IP

## Dilutions

Recommended Dilution:

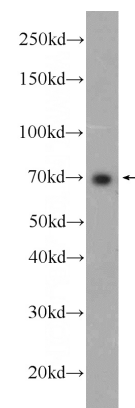
WB: 1:500-1:5000

IP: 1:200-1:2000

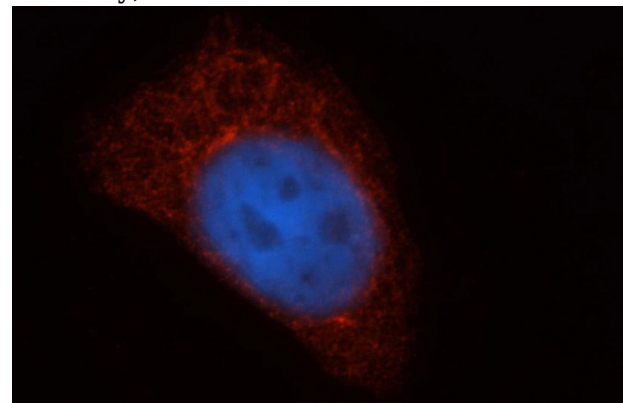
IHC: 1:20-1:200

IF: 1:20-1:200

## Validations



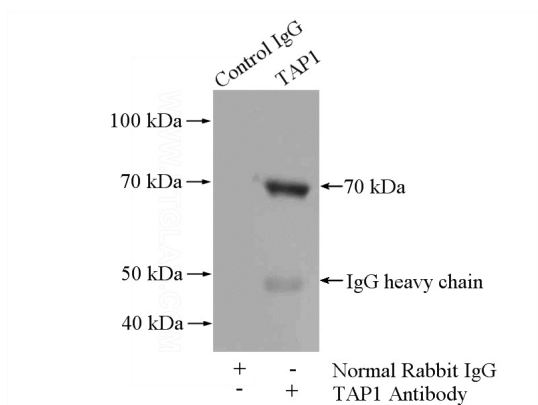
HepG2 cells were subjected to SDS PAGE followed by western blot with Catalog No:115850(TAP1 Antibody) at dilution of 1:1000



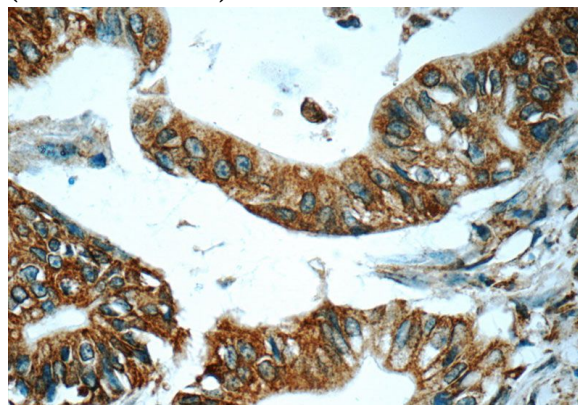
Immunofluorescent analysis of HepG2 cells, using TAP1 antibody Catalog No:115850 at 1:50 dilution and Rhodamine-labeled goat anti-rabbit IgG (red). Blue pseudocolor = DAPI (fluorescent DNA dye).

# TAP1 antibody

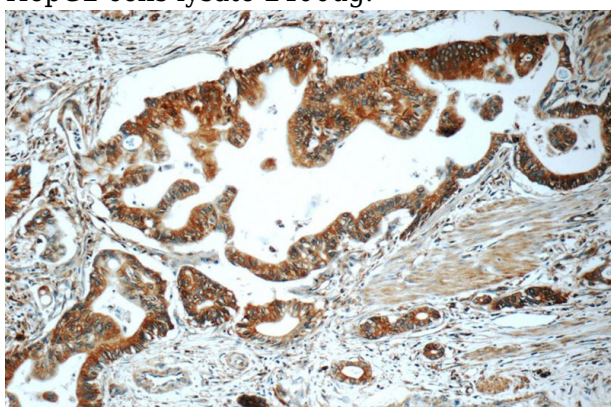
Catalog Number: 115850



Immunohistochemistry of paraffin-embedded human pancreas cancer tissue slide using Catalog No:115850(TAP1 Antibody) at dilution of 1:50 (under 10x lens)



Immunohistochemistry of paraffin-embedded human pancreas cancer tissue slide using Catalog No:115850(TAP1 Antibody) at dilution of 1:50 (under 40x lens)



IP Result of anti-TAP1 (IP:Catalog No:115850, 4ug; Detection:Catalog No:115850 1:500) with HepG2 cells lysate 2400ug.