

# SUMF2 antibody

Catalog Number: 115835

## Product name

SUMF2 antibody

IP: 1:200-1:2000

IHC: 1:20-1:200

## Specificity

Human, Mouse, Rat; other species not tested.

## Antibody description

SUMF2 Rabbit Polyclonal antibody. Positive IHC detected in human breast cancer tissue. Positive WB detected in A431 cells, human lung tissue, human skin tissue, human spleen tissue. Positive IP detected in A431 cells. Observed molecular weight by Western-blot: 34 kDa

## Preparation

This antibody was obtained by immunization of SUMF2 recombinant protein (Accession Number: BC015600). Purification method: Antigen affinity purified.

## Formulation

PBS with 0.1% sodium azide and 50% glycerol pH 7.3.

## Storage

Store at -20°C. DO NOT ALIQUOT

## Clonality

Polyclonal

## Ig Type

Rabbit IgG

## Applications

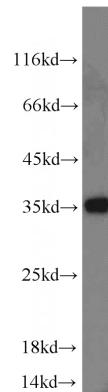
ELISA, WB, IHC, IP

## Dilutions

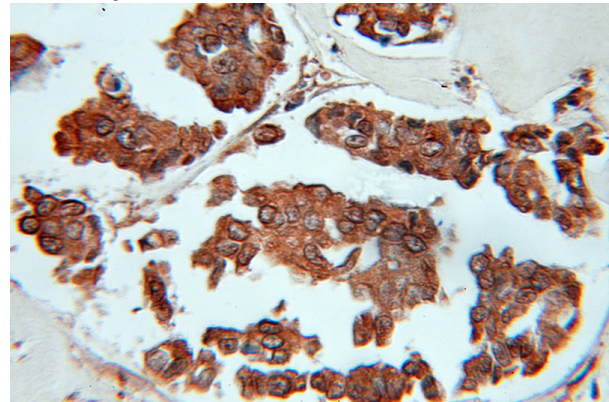
Recommended Dilution:

WB: 1:200-1:2000

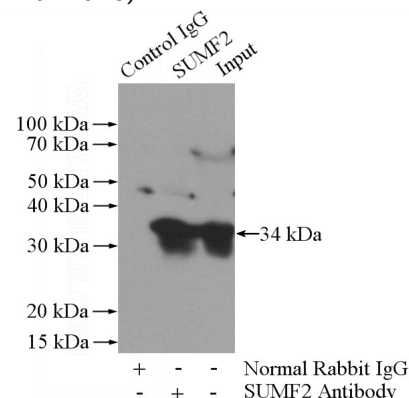
## Validations



A431 cells were subjected to SDS PAGE followed by western blot with Catalog No:115835(SUMF2 antibody) at dilution of 1:500



Immunohistochemical of paraffin-embedded human breast cancer using Catalog No:115835(SUMF2 antibody) at dilution of 1:50 (under 10x lens)



IP Result of anti-SUMF2 (IP:Catalog No:115835,

# SUMF2 antibody



Catalog Number: 115835

---

4ug; Detection:Catalog No:115835 1:500) with A431 cells lysate 1520ug.