

# SULT2B1 antibody

Catalog Number: 115832

## Product name

SULT2B1 antibody

IP: 1:200-1:1000

IHC: 1:20-1:200

## Specificity

Human, Mouse, Rat; other species not tested.

## Antibody description

SULT2B1 Rabbit Polyclonal antibody. Positive IHC detected in human prostate cancer tissue, human placenta tissue. Positive IP detected in mouse skin tissue. Positive WB detected in mouse skin tissue. Observed molecular weight by Western-blot: 39 kDa

## Preparation

This antibody was obtained by immunization of SULT2B1 recombinant protein (Accession Number: NM\_177973). Purification method: Antigen affinity purified.

## Formulation

PBS with 0.02% sodium azide and 50% glycerol pH 7.3.

## Storage

Store at -20°C. DO NOT ALIQUOT

## Clonality

Polyclonal

## Ig Type

Rabbit IgG

## Applications

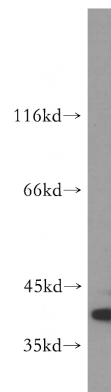
ELISA, WB, IHC, IP

## Dilutions

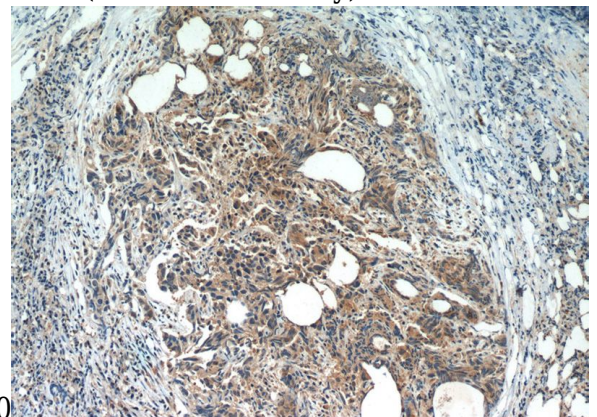
Recommended Dilution:

WB: 1:500-1:5000

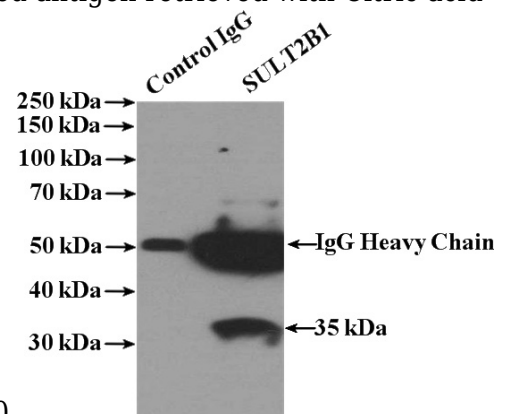
## Validations



mouse skin tissue were subjected to SDS PAGE followed by western blot with Catalog No:115832(SULT2B1 antibody) at dilution of



Immunohistochemistry of paraffin-embedded human prostate cancer slide using Catalog No:115832(SULT2B1 Antibody) at dilution of 1:50. Heat mediated antigen retrieved with Citric acid



buffer, pH6.0.

# SULT2B1 antibody



Catalog Number: 115832

---

IP Result of anti-SULT2B1 (IP:Catalog No:115832, 4ug; Detection:Catalog No:115832 1:400) with mouse skin tissue lysate 3200ug.