

SULT1C2 antibody



Catalog Number: 115829

Product name

SULT1C2 antibody

Specificity

Human, Mouse, Rat; other species not tested.

Antibody description

SULT1C2 Rabbit Polyclonal antibody. Positive WB detected in human stomach tissue, human kidney tissue, human liver tissue, mouse liver tissue. Positive IHC detected in human prostate cancer tissue. Observed molecular weight by Western-blot: 30-35kd

Preparation

This antibody was obtained by immunization of SULT1C2 recombinant protein (Accession Number: NM_001056). Purification method: Antigen affinity purified.

Formulation

PBS with 0.1% sodium azide and 50% glycerol pH 7.3.

Storage

Store at -20°C. DO NOT ALIQUOT

Clonality

Polyclonal

Ig Type

Rabbit IgG

Applications

ELISA, WB, IHC

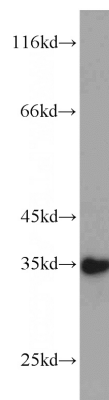
Dilutions

Recommended Dilution:

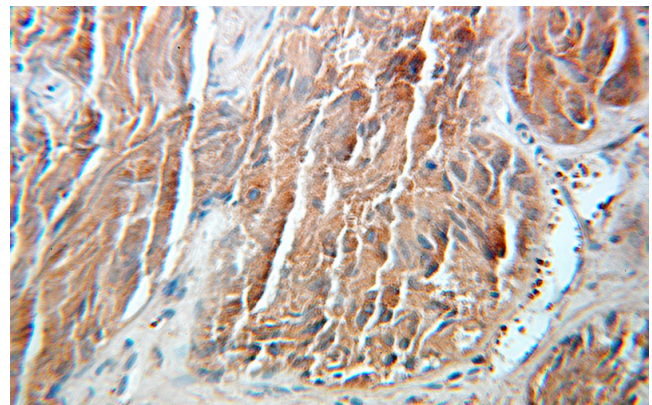
WB: 1:500-1:5000

IHC: 1:20-1:200

Validations



human stomach tissue were subjected to SDS PAGE followed by western blot with Catalog No:115829(SULT1C2 antibody) at dilution of 1:1000



Immunohistochemical of paraffin-embedded human prostate cancer using Catalog No:115829(SULT1C2 antibody) at dilution of 1:100 (under 25x lens)