

SUCLG2 antibody



Catalog Number: 115820

Product name

SUCLG2 antibody

WB: 1:500-1:5000

IP: 1:200-1:2000

Specificity

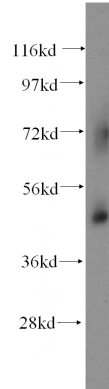
Human, Mouse, Rat; other species not tested.

IHC: 1:20-1:200

Antibody description

SUCLG2 Rabbit Polyclonal antibody. Positive IP detected in mouse kidney tissue. Positive WB detected in human heart tissue, COLO 320 cells, mouse kidney tissue. Positive IHC detected in human colon cancer tissue, human gliomas tissue. Observed molecular weight by Western-blot: 47 kDa

Validations



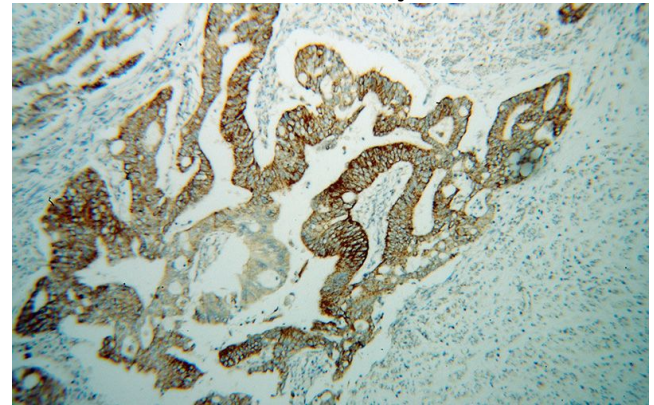
Preparation

This antibody was obtained by immunization of SUCLG2 recombinant protein (Accession Number: XM_047449140). Purification method: Antigen affinity purified.

human heart tissue were subjected to SDS PAGE followed by western blot with Catalog No:115820(SUCLG2 antibody) at dilution of 1:500

Formulation

PBS with 0.02% sodium azide and 50% glycerol pH 7.3.



Storage

Store at -20°C. DO NOT ALIQUOT

Clonality

Polyclonal

Immunohistochemical of paraffin-embedded human colon cancer using Catalog No:115820(SUCLG2 antibody) at dilution of 1:100 (under 10x lens)

Ig Type

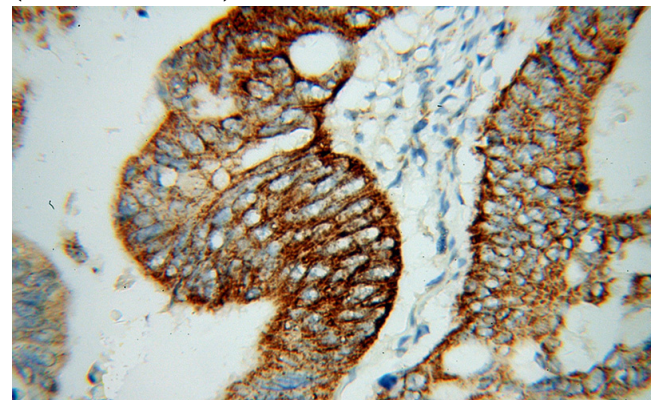
Rabbit IgG

Applications

ELISA, WB, IHC, IP

Dilutions

Recommended Dilution:



SUCLG2 antibody

Catalog Number: 115820

Immunohistochemical of paraffin-embedded human colon cancer using Catalog No:115820(SUCLG2 antibody) at dilution of 1:100

IP Result of anti-SUCLG2 (IP:Catalog No:115820, 4ug; Detection:Catalog No:115820 1:600) with mouse kidney tissue lysate 4800ug.

