

SUCLG1 antibody



Catalog Number: 115819

Product name

SUCLG1 antibody

Specificity

Human, Mouse, Rat; other species not tested.

Antibody description

SUCLG1 Rabbit Polyclonal antibody. Positive IHC detected in human liver cancer tissue. Positive WB detected in mouse kidney tissue. Observed molecular weight by Western-blot: 35kd

Preparation

This antibody was obtained by immunization of SUCLG1 recombinant protein (Accession Number: BC000504). Purification method: Antigen affinity purified.

Formulation

PBS with 0.02% sodium azide and 50% glycerol pH 7.3.

Storage

Store at -20°C. DO NOT ALIQUOT

Clonality

Polyclonal

Ig Type

Rabbit IgG

Applications

ELISA, WB, IHC

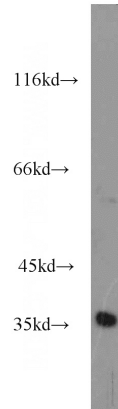
Dilutions

Recommended Dilution:

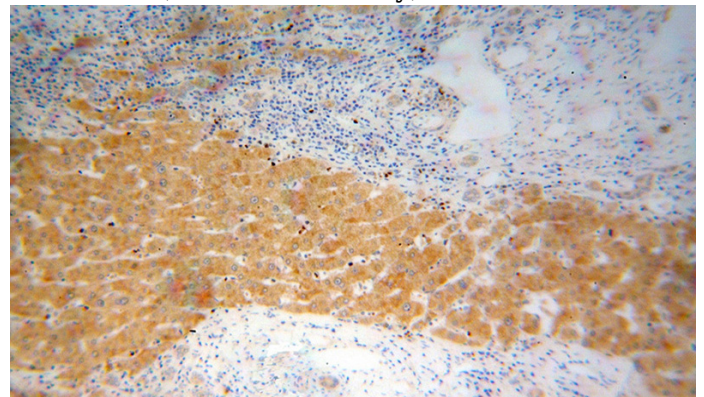
WB: 1:200-1:2000

IHC: 1:20-1:200

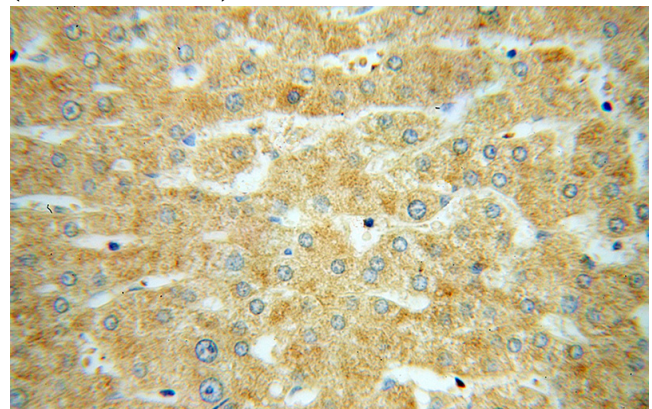
Validations



mouse kidney tissue were subjected to SDS PAGE followed by western blot with Catalog No:115819(SUCLG1 antibody) at dilution of 1:500



Immunohistochemical of paraffin-embedded human liver cancer using Catalog No:115819(SUCLG1 antibody) at dilution of 1:100 (under 10x lens)



Immunohistochemical of paraffin-embedded human liver cancer using Catalog No:115819(SUCLG1 antibody) at dilution of 1:100 (under 40x lens)