

# STUB1 antibody



Catalog Number: 115807

## Product name

STUB1 antibody

IHC: 1:20-1:200

IF: 1:20-1:200

## Specificity

Human, Mouse, Rat; other species not tested.

## Antibody description

STUB1 Rabbit Polyclonal antibody. Positive WB detected in mouse liver tissue, MCF7 cells. Positive IF detected in MCF-7 cells. Positive IHC detected in human heart tissue, human liver tissue, human skeletal muscle tissue. Observed molecular weight by Western-blot: 35 kDa

## Preparation

This antibody was obtained by immunization of Peptide (Accession Number: NM\_005861). Purification method: Antigen affinity purified.

## Formulation

PBS with 0.02% sodium azide and 50% glycerol pH 7.3.

## Storage

Store at -20°C. DO NOT ALIQUOT

## Clonality

Polyclonal

## Ig Type

Rabbit IgG

## Applications

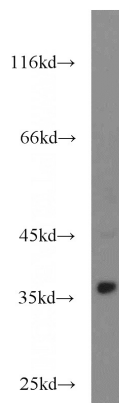
ELISA, WB, IHC, IF

## Dilutions

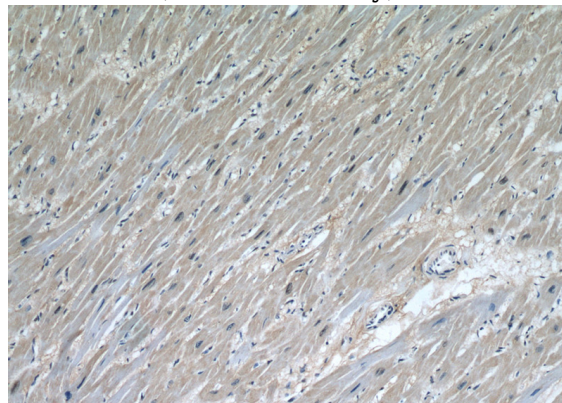
Recommended Dilution:

WB: 1:200-1:2000

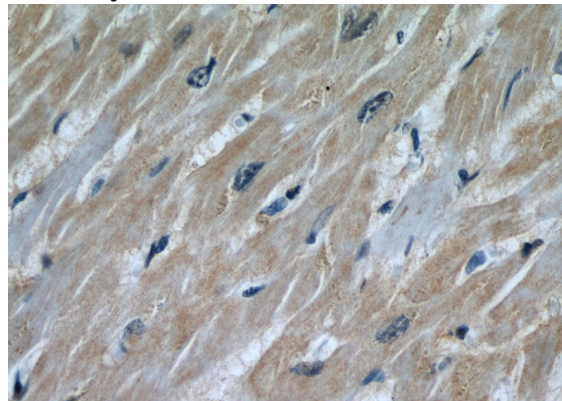
## Validations



mouse liver tissue were subjected to SDS PAGE followed by western blot with Catalog No:115807(STUB1 antibody) at dilution of 1:300



Immunohistochemical of paraffin-embedded human heart using Catalog No:115807(STUB1 antibody) at dilution of 1:50 (under 10x lens)



Immunohistochemical of paraffin-embedded human heart using Catalog No:115807(STUB1

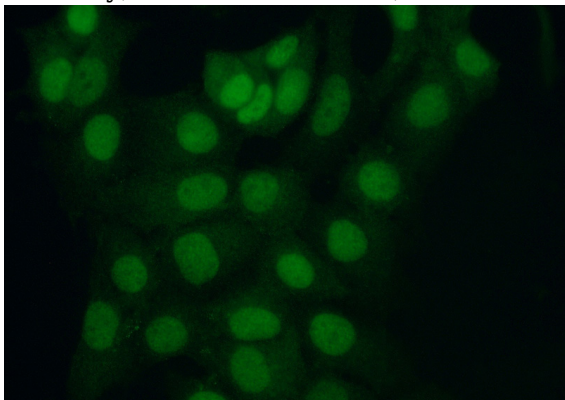
# STUB1 antibody



Catalog Number: 115807

---

antibody) at dilution of 1:50 (under 40x lens)



Immunofluorescent analysis of (10% Formaldehyde) fixed MCF-7 cells using Catalog No:115807(STUB1 Antibody) at dilution of 1:50 and Alexa Fluor 488-conjugated AffiniPure Goat Anti-Rabbit IgG(H+L)