

SYTL2 antibody

Catalog Number: 115805

Product name

SYTL2 antibody

WB: 1:200-1:2000

IHC: 1:20-1:200

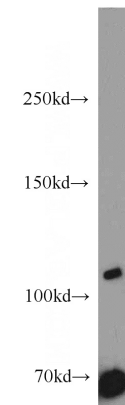
Immunogen

[Human SYTL2 Recombinant protein \(GST tag\)](#)

Validations

Specificity

Human, Mouse, Rat; other species not tested.



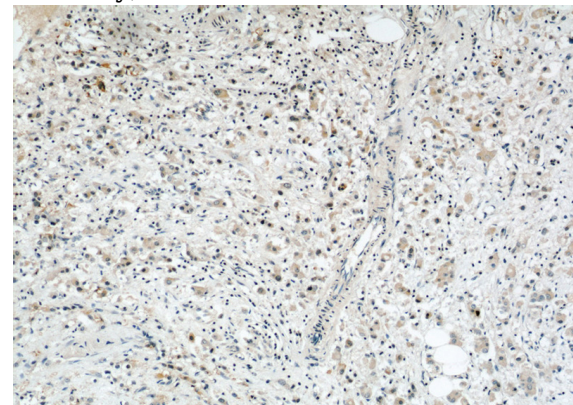
Antibody description

SYTL2 Rabbit Polyclonal antibody. Positive IHC detected in human breast cancer tissue. Positive WB detected in Jurkat cells. Observed molecular weight by Western-blot: 100-105kd

Jurkat cells were subjected to SDS PAGE followed by western blot with Catalog No:115805(SYTL2 antibody) at dilution of 1:500

Preparation

This antibody was obtained by immunization of SYTL2 recombinant protein (Accession Number: BC015540). Purification method: Antigen affinity purified.



Formulation

PBS with 0.1% sodium azide and 50% glycerol pH 7.3.

Storage

Store at -20°C. DO NOT ALIQUOT

Clonality

Polyclonal

Ig Type

Rabbit IgG

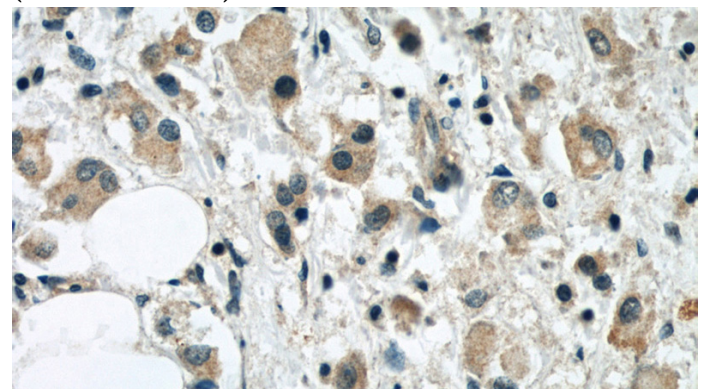
Applications

ELISA, WB, IHC

Dilutions

Recommended Dilution:

Immunohistochemical of paraffin-embedded human breast cancer using Catalog No:115805(SYTL2 antibody) at dilution of 1:50 (under 10x lens)



Immunohistochemical of paraffin-embedded

SYTL2 antibody



Catalog Number: 115805

human breast cancer using Catalog

No:115805(SYTL2 antibody) at dilution of 1:50
(under 40x lens)