

# Syntenin 2 antibody



Catalog Number: 115802

## Product name

Syntenin 2 antibody

## Specificity

Human, Mouse, Rat; other species not tested.

## Antibody description

Syntenin 2 Rabbit Polyclonal antibody. Positive IHC detected in human breast cancer tissue, human gliomas tissue. Positive WB detected in mouse brain tissue, human liver tissue, mouse heart tissue. Observed molecular weight by Western-blot: 35-37kd

## Preparation

This antibody was obtained by immunization of Syntenin 2 recombinant protein (Accession Number: NM\_015685). Purification method: Antigen affinity purified.

## Formulation

PBS with 0.1% sodium azide and 50% glycerol pH 7.3.

## Storage

Store at -20°C. DO NOT ALIQUOT

## Clonality

Polyclonal

## Ig Type

Rabbit IgG

## Applications

ELISA, WB, IHC

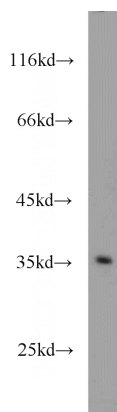
## Dilutions

Recommended Dilution:

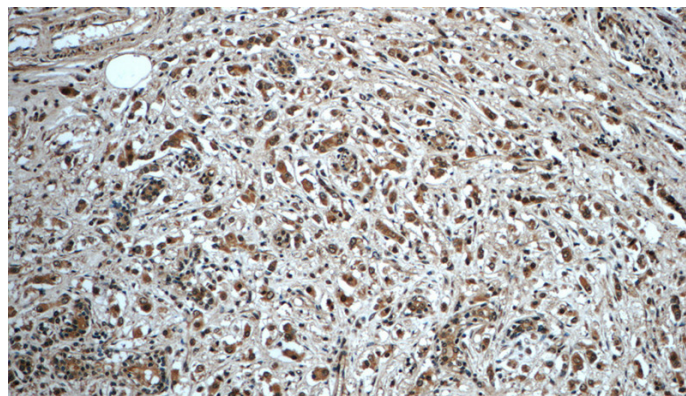
WB: 1:200-1:2000

IHC: 1:20-1:200

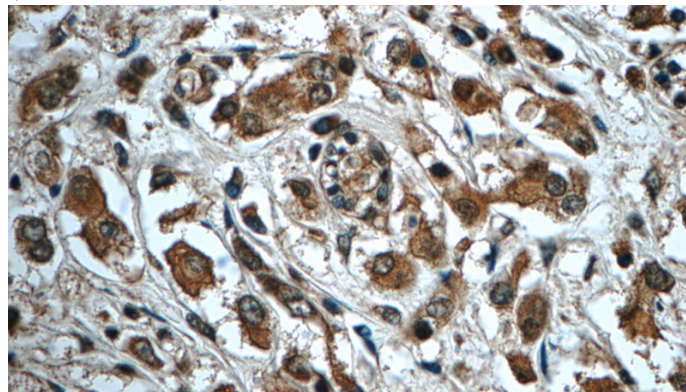
## Validations



mouse brain tissue were subjected to SDS PAGE followed by western blot with Catalog No:115802(SDCBP2 antibody) at dilution of 1:1000



Immunohistochemistry of paraffin-embedded human breast cancer tissue slide using Catalog No:115802(SDCBP2 Antibody) at dilution of 1:50 (under 10x lens)



Immunohistochemistry of paraffin-embedded human breast cancer tissue slide using Catalog

# Syntenin 2 antibody



Catalog Number: 115802

---

No:115802(SDCBP2 Antibody) at dilution of 1:50 (under 40x lens)