

# Synaptophysin antibody



Catalog Number: 115768

## Product name

Synaptophysin antibody

Recommended Dilution:

WB: 1:500-1:5000

## Specificity

Human, Mouse, Rat; other species not tested.

IP: 1:500-1:5000

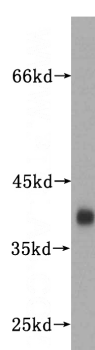
IHC: 1:20-1:200

## Antibody description

Synaptophysin Rabbit Polyclonal antibody. Positive IP detected in mouse brain tissue. Positive WB detected in human brain tissue, mouse brain tissue, mouse cerebellum tissue. Positive IHC detected in human pituitary adenoma tissue, human brain tissue, human pancreas tissue. Positive IF detected in PC-12 cells. Observed molecular weight by Western-blot: 38 kDa

IF: 1:10-1:100

## Validations



## Preparation

This antibody was obtained by immunization of Synaptophysin recombinant protein (Accession Number: NM\_003179). Purification method: Antigen affinity purified.

human brain tissue were subjected to SDS PAGE followed by western blot with Catalog No:115768(SYP antibody) at dilution of 1:1500

## Formulation

PBS with 0.02% sodium azide and 50% glycerol pH 7.3.

## Storage

Store at -20°C. DO NOT ALIQUOT

## Clonality

Polyclonal

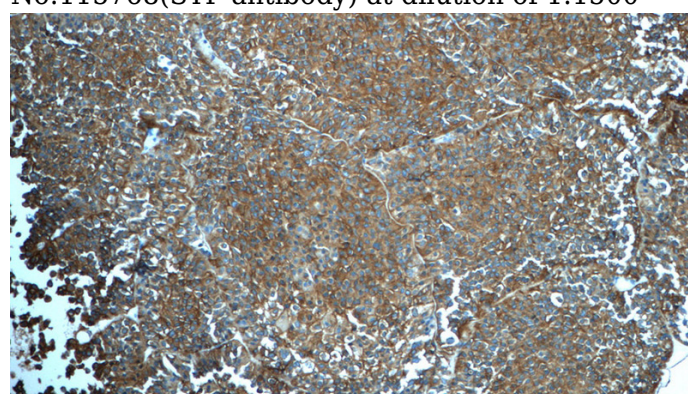
## Ig Type

Rabbit IgG

## Applications

ELISA, WB, IHC, IP, IF

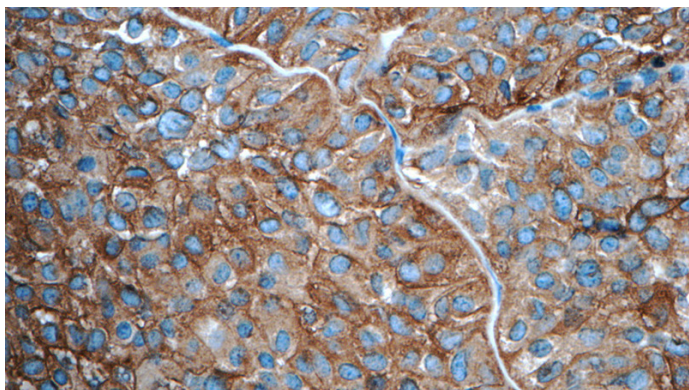
## Dilutions



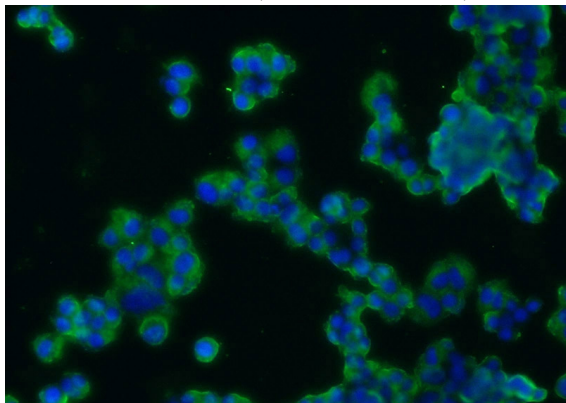
Immunohistochemistry of paraffin-embedded human pituitary adenoma tissue slide using Catalog No:115768(Synaptophysin; SYP Antibody) at dilution of 1:50 (under 10x lens)

# Synaptophysin antibody

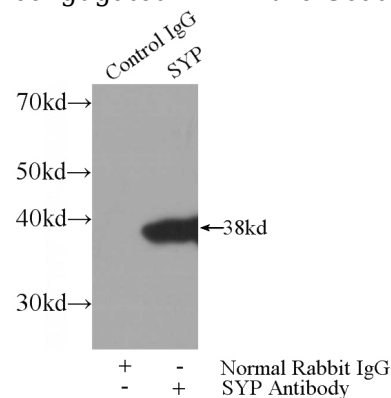
Catalog Number: 115768



Immunohistochemistry of paraffin-embedded human pituitary adenoma tissue slide using Catalog No:115768(Synaptophysin; SYP Antibody) at dilution of 1:50 (under 40x lens)



Immunofluorescent analysis of PC-12 cells using Catalog No:115768(Synaptophysin; SYP Antibody) at dilution of 1:25 and Alexa Fluor 488-conjugated AffiniPure Goat Anti-Rabbit IgG(H+L)



IP Result of anti-Synaptophysin; SYP (IP:Catalog No:115768, 3ug; Detection:Catalog No:115768 1:1000) with mouse brain tissue lysate 4000ug.