

SYCE1 antibody

Catalog Number: 115757

Product name

SYCE1 antibody

Specificity

Human, Mouse, Rat; other species not tested.

Antibody description

SYCE1 Rabbit Polyclonal antibody. Positive WB detected in mouse testis tissue, PC-3 cells, rat testis tissue. Positive IHC detected in human testis tissue, human ovary tissue. Observed molecular weight by Western-blot: 44 kDa

Preparation

This antibody was obtained by immunization of SYCE1 recombinant protein (Accession Number: BC034821). Purification method: Antigen affinity purified.

Formulation

PBS with 0.02% sodium azide and 50% glycerol pH 7.3.

Storage

Store at -20°C. DO NOT ALIQUOT

Clonality

Polyclonal

Ig Type

Rabbit IgG

Applications

ELISA, IHC, WB

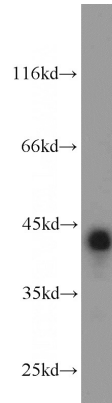
Dilutions

Recommended Dilution:

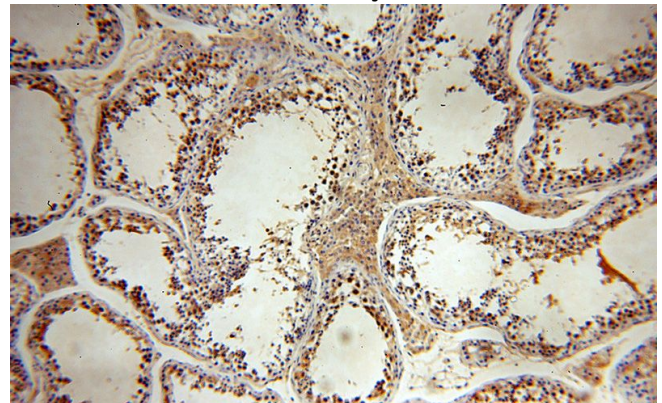
WB: 1:500-1:5000

IHC: 1:20-1:200

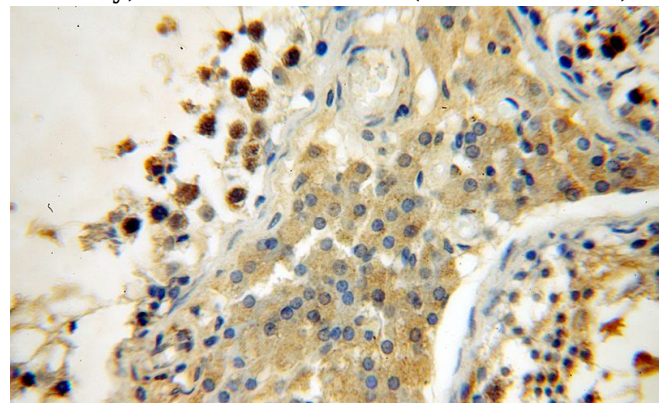
Validations



mouse testis tissue were subjected to SDS PAGE followed by western blot with Catalog No:115757(SYCE1 antibody) at dilution of 1:1000



Immunohistochemical of paraffin-embedded human testis using Catalog No:115757(SYCE1 antibody) at dilution of 1:100 (under 10x lens)



Immunohistochemical of paraffin-embedded human testis using Catalog No:115757(SYCE1 antibody) at dilution of 1:100 (under 40x lens)