

SYAP1 antibody

Catalog Number: 115756

Product name

SYAP1 antibody

Specificity

Human; other species not tested.

Antibody description

SYAP1 Rabbit Polyclonal antibody. Positive IF detected in HepG2 cells, A431 cells. Positive IHC detected in human cervical cancer tissue, human small intestine tissue. Positive WB detected in HEK-293 cells, A431 cells, HepG2 cells, L02 cells, SMMC-7721 cells. Positive IP detected in L02 cells. Observed molecular weight by Western-blot: 50-55 kDa

Preparation

This antibody was obtained by immunization of SYAP1 recombinant protein (Accession Number: NM_032796). Purification method: Antigen affinity purified.

Formulation

PBS with 0.1% sodium azide and 50% glycerol pH 7.3.

Storage

Store at -20°C. DO NOT ALIQUOT

Clonality

Polyclonal

Ig Type

Rabbit IgG

Applications

ELISA, WB, IHC, IF, IP

Dilutions

Recommended Dilution:

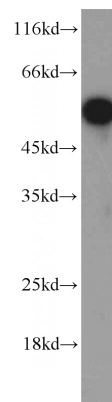
WB: 1:200-1:2000

IP: 1:200-1:2000

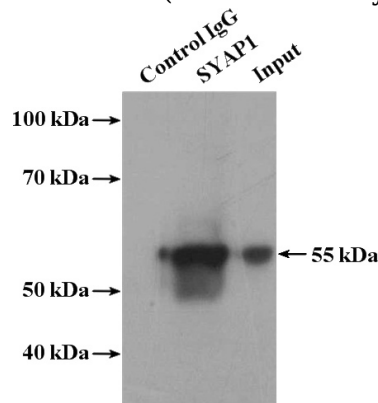
IHC: 1:20-1:200

IF: 1:20-1:200

Validations



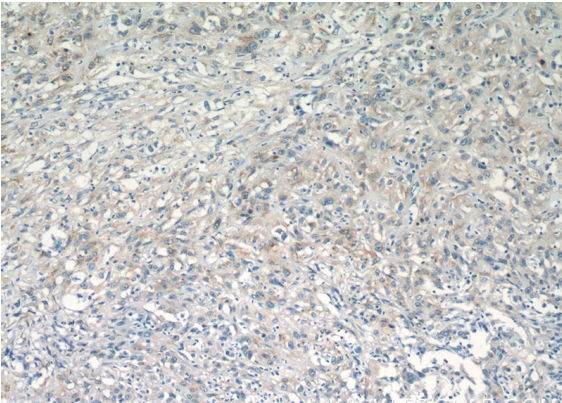
HEK-293 cells were subjected to SDS PAGE followed by western blot with Catalog No:115756(SYAP1 antibody) at dilution of 1:1000



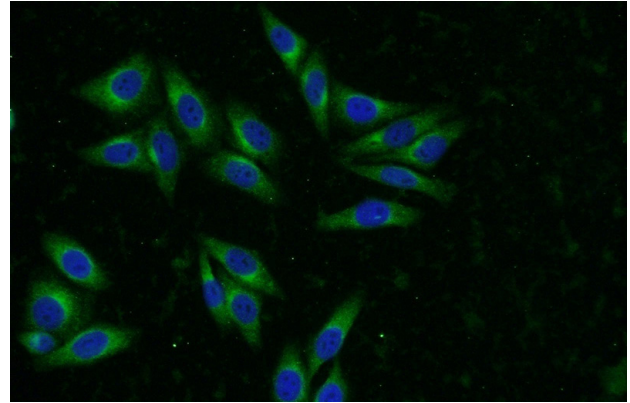
IP Result of anti-SYAP1 (IP:Catalog No:115756, 4ug; Detection:Catalog No:115756 1:500) with L02 cells lysate 1800ug.

SYAP1 antibody

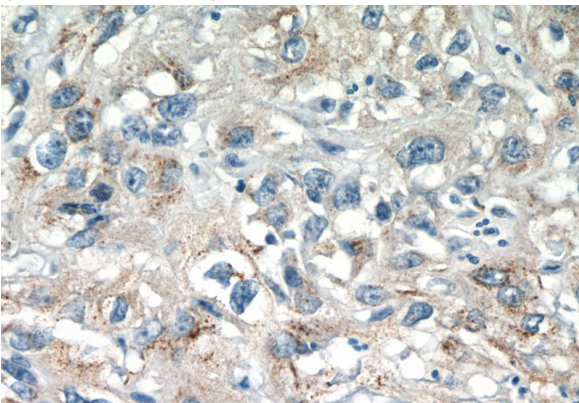
Catalog Number: 115756



Immunohistochemistry of paraffin-embedded human cervical cancer tissue slide using Catalog No:115756(SYAP1 Antibody) at dilution of 1:50 (under 40x lens)



Immunofluorescent analysis of HepG2 cells using Catalog No:115756(SYAP1 Antibody) at dilution of 1:50 and Alexa Fluor 488-conjugated AffiniPure Goat Anti-Rabbit IgG(H+L)



Immunohistochemistry of paraffin-embedded human cervical cancer tissue slide using Catalog No:115756(SYAP1 Antibody) at dilution of 1:50 (under 10x lens)