

SUZ12 antibody

Catalog Number: 115753

Product name

SUZ12 antibody

Specificity

Human, Mouse, Rat; other species not tested.

Antibody description

SUZ12 Rabbit Polyclonal antibody. Positive IHC detected in human breast cancer tissue. Positive IP detected in HeLa cells. Positive WB detected in HeLa cells, HepG2 cells, MCF7 cells. Observed molecular weight by Western-blot: 80-90 kDa

Preparation

This antibody was obtained by immunization of Peptide (Accession Number: NM_015355). Purification method: Antigen affinity purified.

Formulation

PBS with 0.02% sodium azide and 50% glycerol pH 7.3.

Storage

Store at -20°C. DO NOT ALIQUOT

Clonality

Polyclonal

Ig Type

Rabbit IgG

Applications

ELISA, WB, IHC, IP

Dilutions

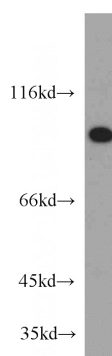
Recommended Dilution:

WB: 1:500-1:5000

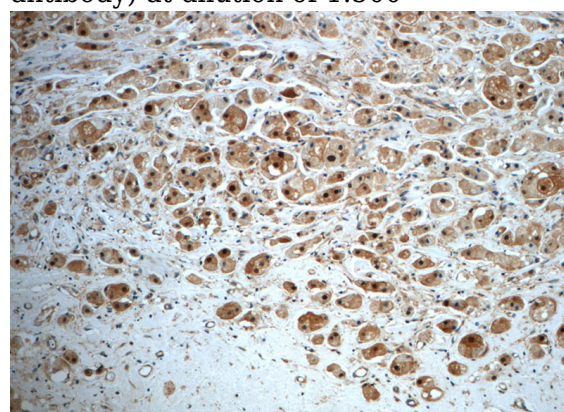
IP: 1:200-1:2000

IHC: 1:20-1:200

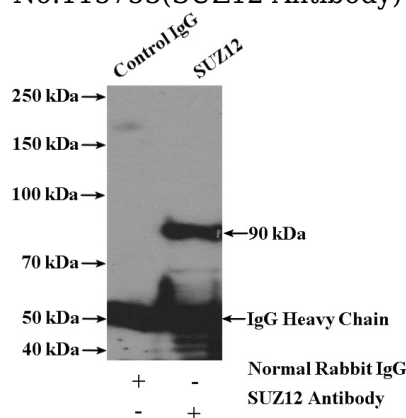
Validations



HeLa cells were subjected to SDS PAGE followed by western blot with Catalog No:115753(SUZ12 antibody) at dilution of 1:500



Immunohistochemistry of paraffin-embedded human breast cancer slide using Catalog No:115753(SUZ12 Antibody) at dilution of 1:50



IP Result of anti-SUZ12 (IP:Catalog No:115753, 4ug; Detection:Catalog No:115753 1:500) with HeLa cells lysate 3200ug.