

SUV39H1 antibody



Catalog Number: 115751

Product name

SUV39H1 antibody

Specificity

Human, Mouse, Rat; other species not tested.

Antibody description

SUV39H1 Rabbit Polyclonal antibody. Positive WB detected in HepG2 cells, C6 cells, HEK-293 cells, HeLa cells, mouse small intestine tissue. Positive IP detected in HeLa cells. Observed molecular weight by Western-blot: 48-50kd

Preparation

This antibody was obtained by immunization of SUV39H1 recombinant protein (Accession Number: NM_003173). Purification method: Antigen affinity purified.

Formulation

PBS with 0.1% sodium azide and 50% glycerol pH 7.3.

Storage

Store at -20°C. DO NOT ALIQUOT

Clonality

Polyclonal

Ig Type

Rabbit IgG

Applications

ELISA, WB, IP

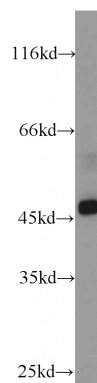
Dilutions

Recommended Dilution:

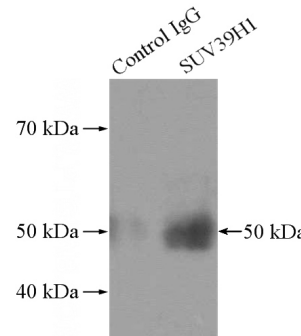
WB: 1:500-1:5000

IP: 1:200-1:2000

Validations



HepG2 cells were subjected to SDS PAGE followed by western blot with Catalog No:115751(SUV39H1 antibody) at dilution of



1:1000

+ - Normal Rabbit IgG
- + SUV39H1 Antibody

IP Result of anti-SUV39H1 (IP:Catalog No:115751, 4ug; Detection:Catalog No:115751 1:500) with HeLa cells lysate 2800ug.