

# Surfactant protein D antibody



Catalog Number: 115748

## Product name

Surfactant protein D antibody

## Specificity

Human, Mouse, Rat; other species not tested.

## Antibody description

Surfactant protein D Rabbit Polyclonal antibody. Positive IHC detected in human lung cancer tissue, human kidney tissue, human placenta tissue. Positive IP detected in mouse lung tissue. Observed molecular weight by Western-blot: 37 kDa

## Preparation

This antibody was obtained by immunization of Surfactant protein D recombinant protein (Accession Number: NM\_003019). Purification method: Antigen affinity purified.

## Formulation

PBS with 0.1% sodium azide and 50% glycerol pH 7.3.

## Storage

Store at -20°C. DO NOT ALIQUOT

## Clonality

Polyclonal

## Ig Type

Rabbit IgG

## Applications

ELISA, IHC, IP

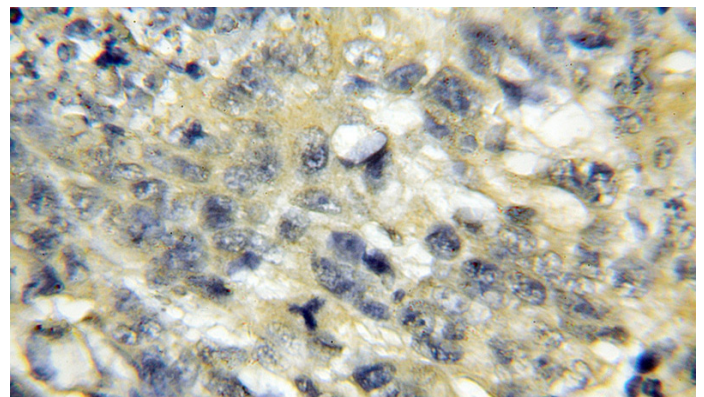
## Dilutions

Recommended Dilution:

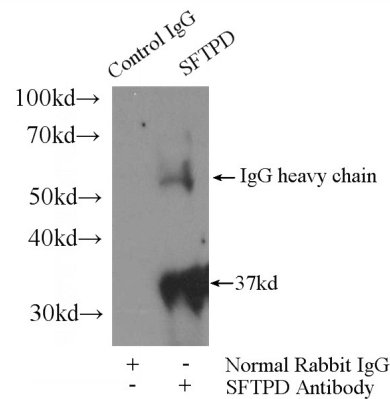
IP: 1:200-1:1000

IHC: 1:20-1:200

## Validations



Immunohistochemical of paraffin-embedded human lung cancer using Catalog No:115748(SFTPD antibody) at dilution of 1:50 (under 10x lens)



IP Result of anti-SFTPD (IP:Catalog No:115748, 3ug; Detection:Catalog No:115748 1:300) with mouse lung tissue lysate 2800ug.