

# SURF1 antibody

Catalog Number: 115746

## Product name

SURF1 antibody

IHC: 1:20-1:200

IF: 1:20-1:200

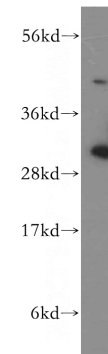
## Specificity

Human, Mouse, Rat; other species not tested.

## Validations

## Antibody description

SURF1 Rabbit Polyclonal antibody. Positive WB detected in human heart tissue. Positive IHC detected in human heart tissue. Positive IF detected in HeLa cells. Observed molecular weight by Western-blot: 30-31 kDa



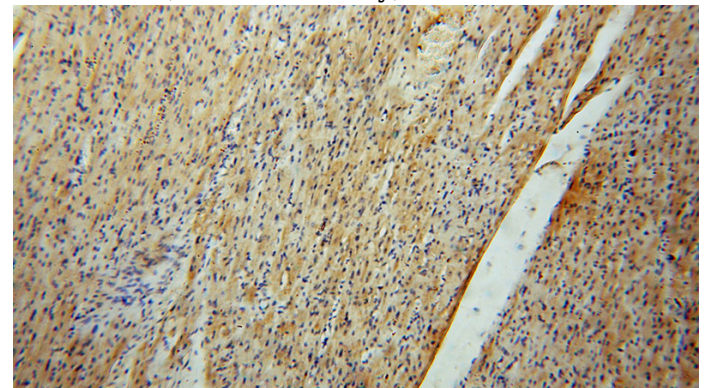
## Preparation

This antibody was obtained by immunization of SURF1 recombinant protein (Accession Number: NM\_003172). Purification method: Antigen affinity purified.

human heart tissue were subjected to SDS PAGE followed by western blot with Catalog No:115746(SURF1 antibody) at dilution of 1:500

## Formulation

PBS with 0.02% sodium azide and 50% glycerol pH 7.3.



## Storage

Store at -20°C. DO NOT ALIQUOT

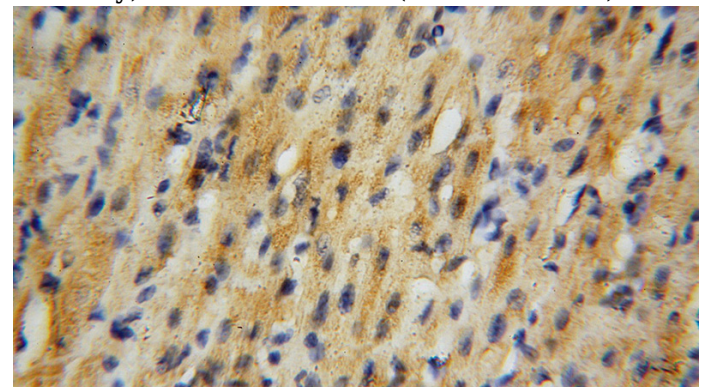
## Clonality

Polyclonal

Immunohistochemical of paraffin-embedded human heart using Catalog No:115746(SURF1 antibody) at dilution of 1:50 (under 10x lens)

## Ig Type

Rabbit IgG



## Applications

ELISA, WB, IHC, IF

## Dilutions

Recommended Dilution:

WB: 1:500-1:5000

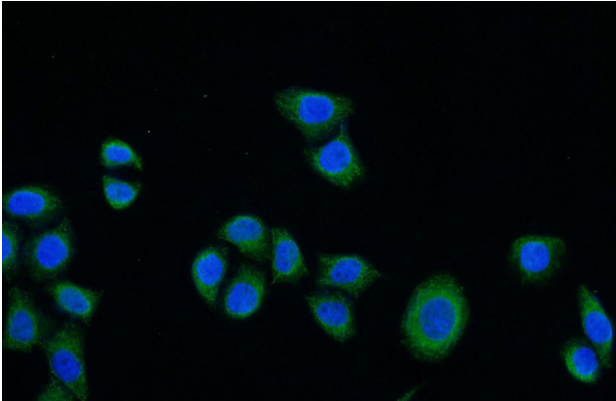
Immunohistochemical of paraffin-embedded human heart using Catalog No:115746(SURF1

# SURF1 antibody

Catalog Number: 115746

---

antibody) at dilution of 1:50 (under 40x lens)



Immunofluorescent analysis of HeLa cells using Catalog No:115746(SURF1 Antibody) at dilution of 1:50 and Alexa Fluor 488-conjugated AffiniPure Goat Anti-Rabbit IgG(H+L)