

SUPV3L1 antibody

Catalog Number: 115744

Product name

SUPV3L1 antibody

IP: 1:200-1:1000

IF: 1:50-1:500

Specificity

Human, Mouse, Rat; other species not tested.

Antibody description

SUPV3L1 Rabbit Polyclonal antibody. Positive IF detected in HeLa cells. Positive WB detected in PC-3 cells, HeLa cells. Positive IP detected in HeLa cells. Observed molecular weight by Western-blot: 70-80 kDa

Preparation

This antibody was obtained by immunization of SUPV3L1 recombinant protein (Accession Number: NM_003171). Purification method: Antigen affinity purified.

Formulation

PBS with 0.1% sodium azide and 50% glycerol pH 7.3.

Storage

Store at -20°C. DO NOT ALIQUOT

Clonality

Polyclonal

Ig Type

Rabbit IgG

Applications

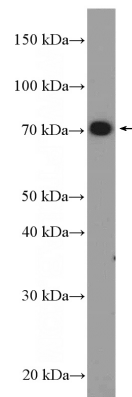
ELISA, IP, WB, IF

Dilutions

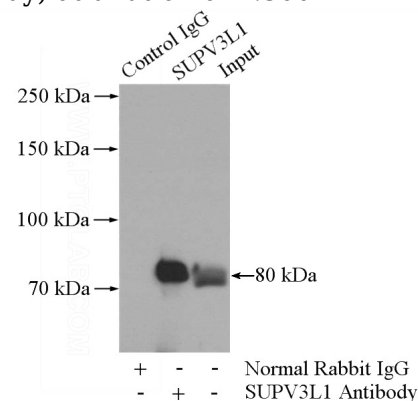
Recommended Dilution:

WB: 1:200-1:1000

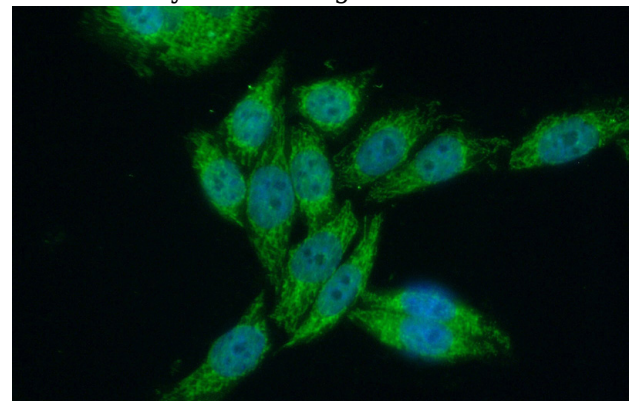
Validations



PC-3 cells were subjected to SDS PAGE followed by western blot with Catalog No:115744(SUPV3L1 Antibody) at dilution of 1:300



IP Result of anti-SUPV3L1 (IP:Catalog No:115744, 4ug; Detection:Catalog No:115744 1:300) with HeLa cells lysate 1200ug.



Immunofluorescent analysis of (10% Formaldehyde) fixed HeLa cells using Catalog

SUPV3L1 antibody



Catalog Number: 115744

No:115744(SUPV3L1 Antibody) at dilution of 1:50 and Alexa Fluor 488-conjugated AffiniPure Goat Anti-Rabbit IgG(H+L)