

SUPT6H antibody



Catalog Number: 115742

Product name

SUPT6H antibody

Specificity

Human, Mouse, Rat; other species not tested.

Antibody description

SUPT6H Rabbit Polyclonal antibody. Positive WB detected in HeLa cells, HEK-293 cells, Jurkat cells. Positive IP detected in HEK-293 cells. Observed molecular weight by Western-blot: 230 kDa

Preparation

This antibody was obtained by immunization of SUPT6H recombinant protein (Accession Number: XM_047436600). Purification method: Antigen affinity purified.

Formulation

PBS with 0.02% sodium azide and 50% glycerol pH 7.3.

Storage

Store at -20°C. DO NOT ALIQUOT

Clonality

Polyclonal

Ig Type

Rabbit IgG

Applications

ELISA, WB, IP

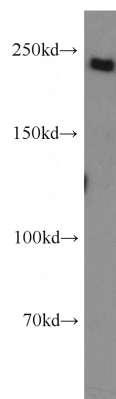
Dilutions

Recommended Dilution:

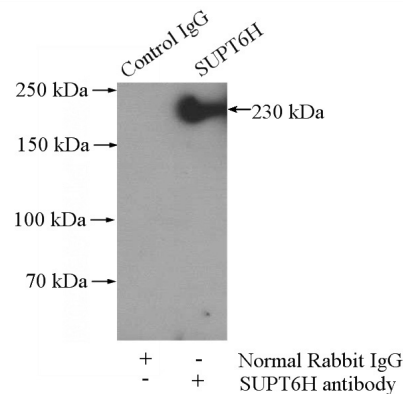
WB: 1:500-1:5000

IP: 1:500-1:5000

Validations



HeLa cells were subjected to SDS PAGE followed by western blot with Catalog No:115742(SUPT6H antibody) at dilution of 1:1000



IP Result of anti-SUPT6H (IP:Catalog No:115742, 4ug; Detection:Catalog No:115742 1:1000) with HEK-293 cells lysate 1200ug.