

STOML2 antibody

Catalog Number: 115731

Product name

STOML2 antibody

Immunogen

[Human STOML2 Recombinant protein \(GST tag\)](#)

Specificity

Human, Mouse, Rat; other species not tested.

Antibody description

STOML2 Rabbit Polyclonal antibody. Positive IF detected in MCF-7 cells. Positive IHC detected in human lung cancer tissue, human breast cancer tissue, human endometrial cancer tissue. Positive WB detected in C6 cells, mouse brain tissue. Positive IP detected in mouse brain tissue. Observed molecular weight by Western-blot: 39 kDa

Preparation

This antibody was obtained by immunization of STOML2 recombinant protein (Accession Number: NM_013442). Purification method: Antigen affinity purified.

Formulation

PBS with 0.1% sodium azide and 50% glycerol pH 7.3.

Storage

Store at -20°C. DO NOT ALIQUOT

Clonality

Polyclonal

Ig Type

Rabbit IgG

Applications

ELISA, IF, IP, WB, IHC

Dilutions

Recommended Dilution:

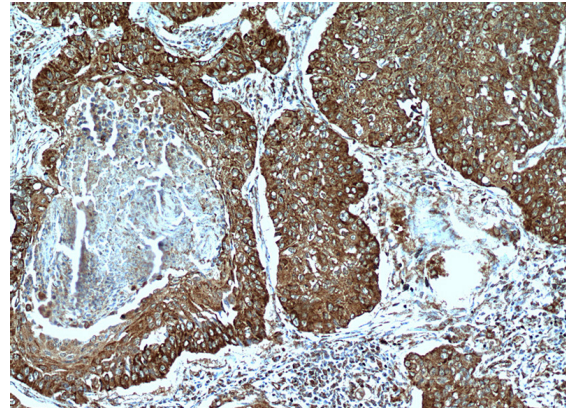
WB: 1:500-1:5000

IP: 1:500-1:5000

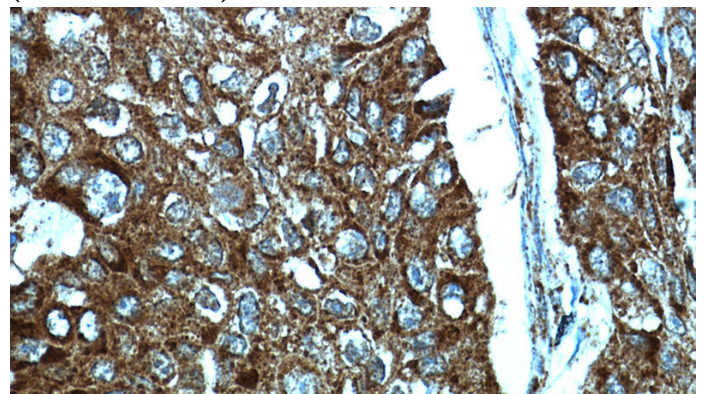
IHC: 1:20-1:200

IF: 1:20-1:200

Validations



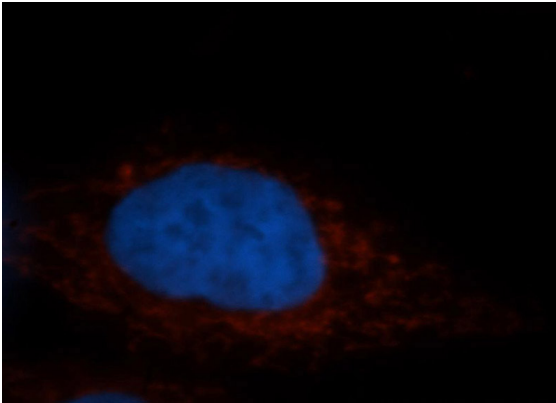
Immunohistochemical of paraffin-embedded human lung cancer using Catalog No:115731(STOML2 antibody) at dilution of 1:100 (under 10x lens)



Immunohistochemical of paraffin-embedded human lung cancer using Catalog No:115731(STOML2 antibody) at dilution of 1:100 (under 40x lens)

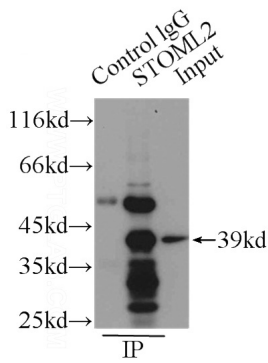
STOML2 antibody

Catalog Number: 115731

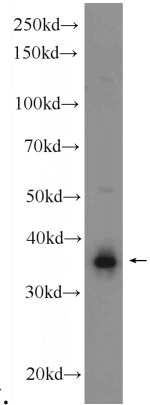


Immunofluorescent analysis of MCF-7 cells, using STOML2 antibody Catalog No:115731 at 1:50 dilution and Rhodamine-labeled goat anti-rabbit IgG (red). Blue pseudocolor = DAPI (fluorescent

DNA dye).



IP Result of anti-STOML2 (IP:Catalog No:115731, 3ug; Detection:Catalog No:115731 1:1000) with



mouse brain tissue lysate 1000ug.

C6 cells were subjected to SDS PAGE followed by western blot with Catalog No:115731(STOML2 Antibody) at dilution of 1:1000