

# STOML1 antibody



Catalog Number: 115730

## Product name

STOML1 antibody

## Specificity

Human, Mouse, Rat; other species not tested.

## Antibody description

STOML1 Rabbit Polyclonal antibody. Positive WB detected in A375 cells, human brain tissue. Positive IHC detected in human gliomas tissue. Observed molecular weight by Western-blot: 45 kDa

## Preparation

This antibody was obtained by immunization of STOML1 recombinant protein (Accession Number: NM\_004809). Purification method: Antigen affinity purified.

## Formulation

PBS with 0.1% sodium azide and 50% glycerol pH 7.3.

## Storage

Store at -20°C. DO NOT ALIQUOT

## Clonality

Polyclonal

## Ig Type

Rabbit IgG

## Applications

ELISA, WB, IHC

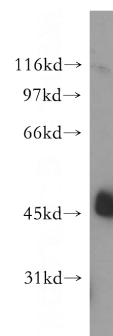
## Dilutions

Recommended Dilution:

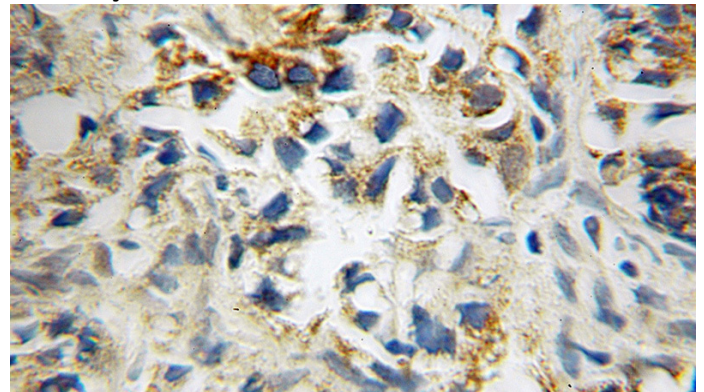
WB: 1:500-1:5000

IHC: 1:20-1:200

## Validations



A375 cells were subjected to SDS PAGE followed by western blot with Catalog No:115730(STOML1 antibody) at dilution of 1:300



Immunohistochemical of paraffin-embedded human gliomas using Catalog No:115730(STOML1 antibody) at dilution of 1:100 (under 10x lens)