

STAT3 antibody

Catalog Number: 115687

Product name

STAT3 antibody

IP: 1:200-1:2000

IHC: 1:20-1:200

Specificity

Human, Mouse; other species not tested.

Antibody description

STAT3 Rabbit Polyclonal antibody. Positive IHC detected in human cervical cancer tissue, human breast cancer tissue, human lung cancer tissue. Positive IP detected in HeLa cells. Positive WB detected in HeLa cells, K-562 cells. Observed molecular weight by Western-blot: 88kd

Preparation

This antibody was obtained by immunization of Peptide (Accession Number: XM_017024975). Purification method: Antigen affinity purified.

Formulation

PBS with 0.02% sodium azide and 50% glycerol pH 7.3.

Storage

Store at -20°C. DO NOT ALIQUOT

Clonality

Polyclonal

Ig Type

Rabbit IgG

Applications

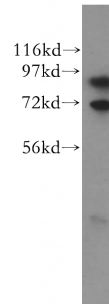
ELISA, WB, IHC, IP

Dilutions

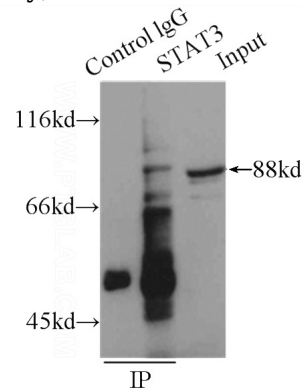
Recommended Dilution:

WB: 1:500-1:5000

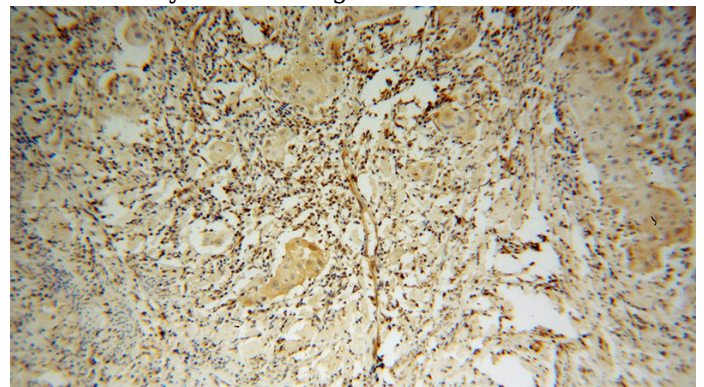
Validations



HeLa cells were subjected to SDS PAGE followed by western blot with Catalog No:115687(STAT3 antibody) at dilution of 1:400



IP Result of anti-STAT3 (IP:Catalog No:115687, 4ug; Detection:Catalog No:115687 1:500) with HeLa cells lysate 1500ug.

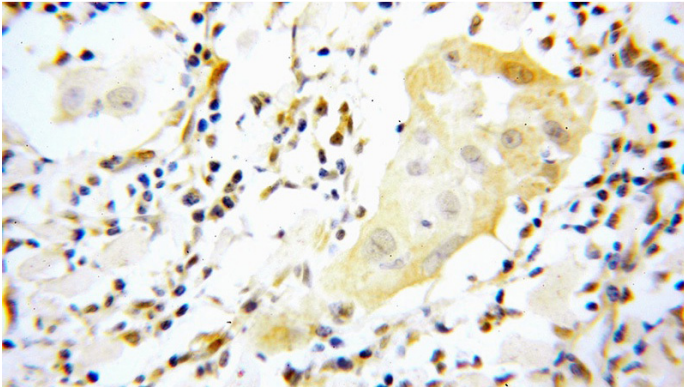


Immunohistochemical of paraffin-embedded human cervical cancer using Catalog

STAT3 antibody

Catalog Number: 115687

No:115687(STAT3 antibody) at dilution of 1:100
(under 10x lens)



Immunohistochemical of paraffin-embedded
human cervical cancer using Catalog
No:115687(STAT3 antibody) at dilution of 1:100
(under 40x lens)